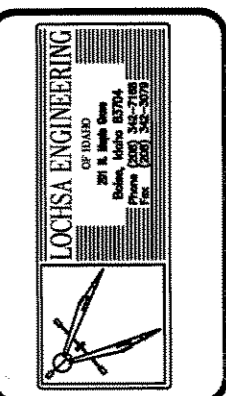


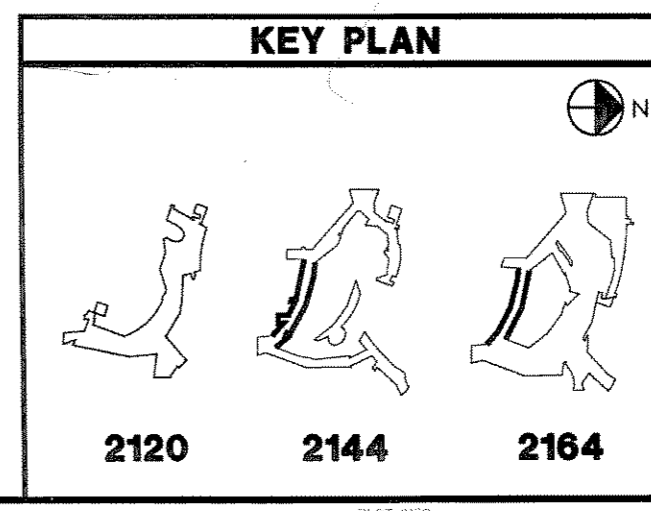
MGM MIRAGE CITYCENTER BLOCK C		SUBMITTAL NO. 0531-05 00-0	
UNIVERSAL SUBMITTAL REVIEW STAMP (WATERMARK)		PROJECT NO. 0510-05(00A)	
REVISION	DATE	BY	CHK
1			
2			
3			
4			
5			
6			
7			
8			
9			
10			
11			
12			
13			
14			
15			
16			
17			
18			
19			
20			



DRAWING STATUS	DATE	NO.	REVISIONS	DATE	BY
PRELIMINARY					
APPROVED	07-11-08	1			
ISSUED FOR FABRICATION					

- NOTES:**
- See General Notes on sheet 75-S0.01 and Typical Details on sheet 75-5.01 and sheet 75-5.02.
  - Typical framing shall be 600S137-33 at 16" oc. for stud length of 0'-0" to 21'-6" and 600S137-43 at 16" oc. for stud length from 21'-6" and greater, uno.
  - Typical box header above openings shall be 2-600S137-33 studs uno. See 14/75-5.01.
  - Horizontal bridging shall be spaced evenly at 8'-0" oc maximum. See Typical Details.
  - Typical sill shall be 18 gage track of same width as wall studs uno. See 15/75-5.01 for sill connection to jamb studs.
  - Typical jamb studs to be 2-600S137-33, uno, See 13/75-5.01.

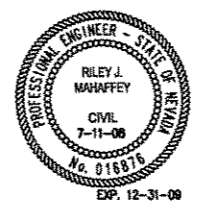
METAL FRAMING SCHEDULE			
BOXED HEADER		BOXED JAMB	
MARK	SIZE	MARK	SIZE
A	2-600S137-43	1	2-600S137-43
B	3-600S137-43	2	2-600S137-33
C	2-362S162-33 WITH 362S200-43	3	3-600S137-43
D	2-600S137-33	4	600S137-33 WITH 600T125-43
E	2-600S162-54	5	4-600S200-68
F	2-1200S162-54	6	5-600S250-97
G	3-800S162-54	7	3-600S162-54
H	2-600S137-54	8	HSS 6x8x1/4
		9	2-600S137-54



**RAYMOND**  
SINCE 1936  
THEMED ENVIRONMENT GROUP  
6485 S. VALLEY VIEW BLVD.  
Las Vegas, Nevada 89118  
PHONE: 702.881.8876  
FAX: 702.881.8876

PROJECT: **SOBELLA RETAIL CITY CENTER**  
LOCATION: **LAS VEGAS, NEVADA**

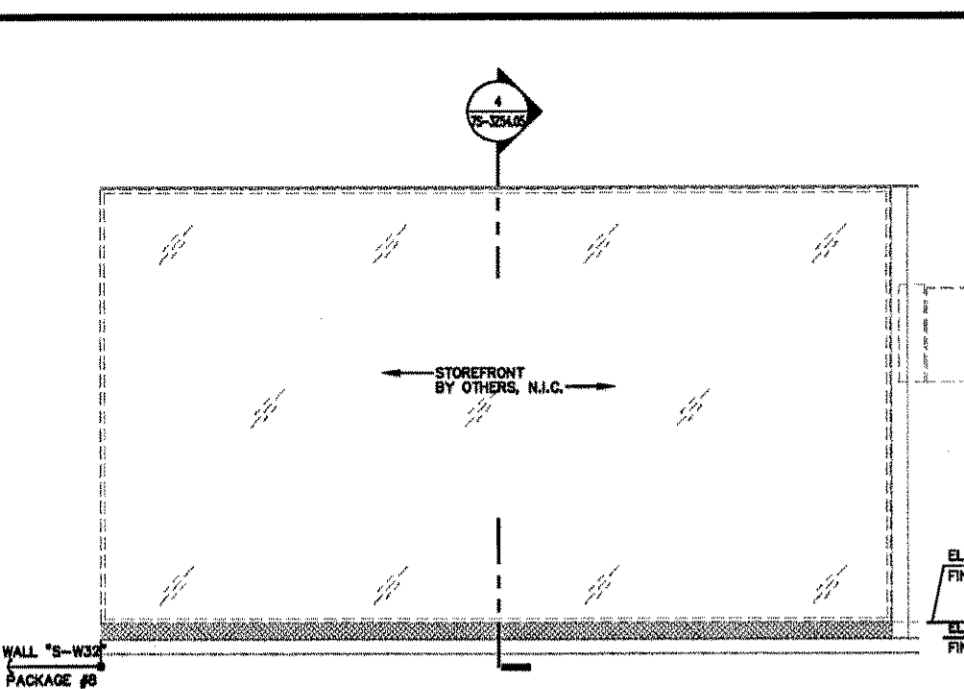
TITLE	AREA
ENLARGED PLANS/ELEVATIONS	AREA 3
AREA NUMBER	7S
PACKAGE #	3Z24.01
SCALE	AS NOTED
DRAWN BY	CO
JOB NUMBER	206343
SHEET NUMBER	7S
	<b>3Z24.01</b>
	<b>AREA 3</b>



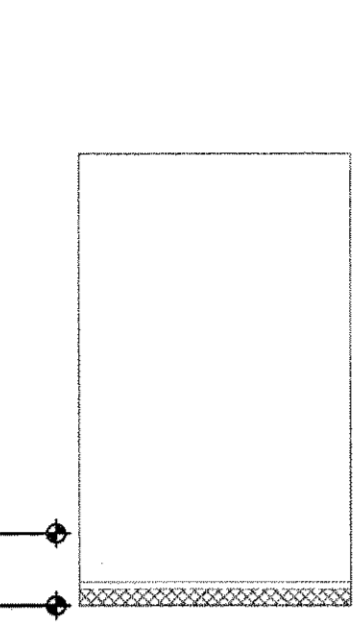




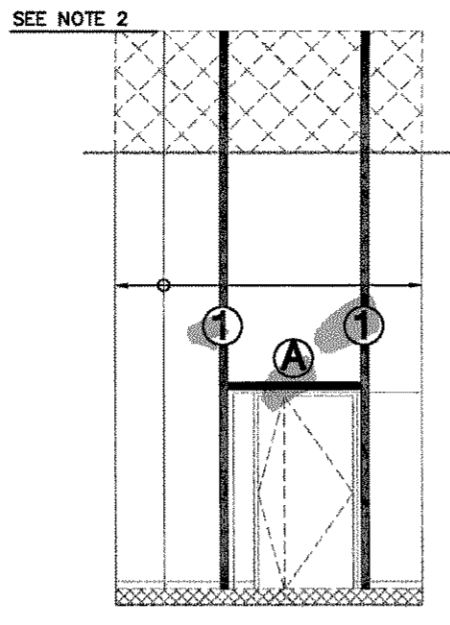




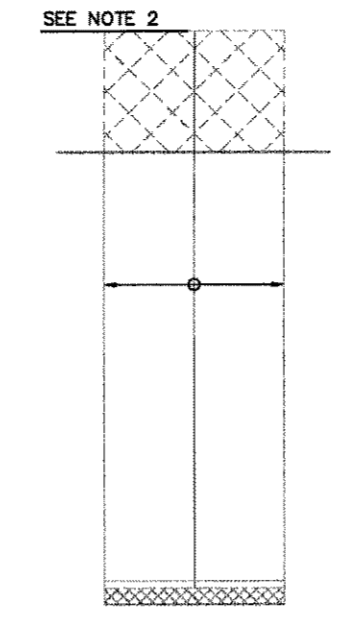
**A WALL 'S-W33'**  
REF: SCALE: 1/4" = 1'-0"



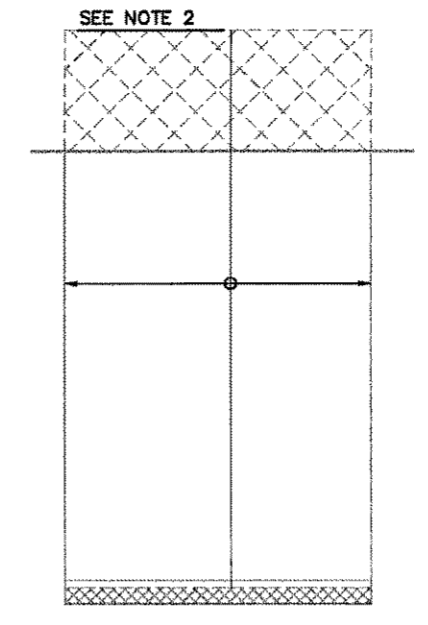
**B CORRIDOR**  
REF: SCALE: 1/4" = 1'-0"



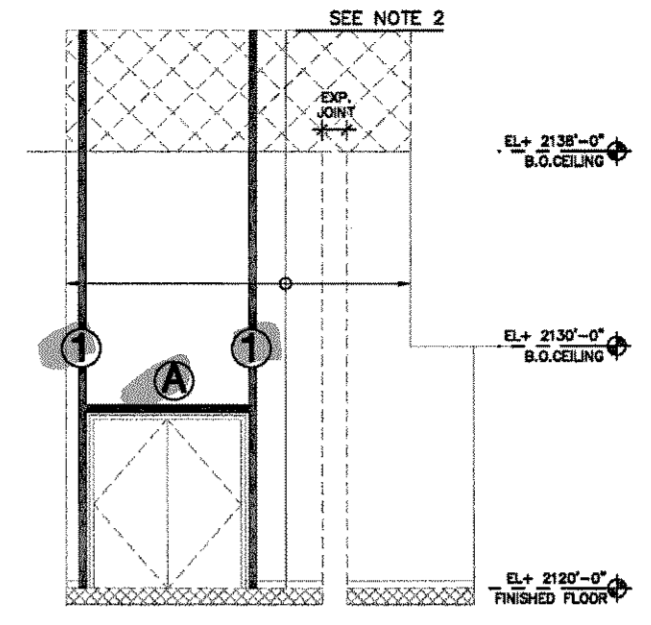
**C CORRIDOR**  
REF: SCALE: 1/4" = 1'-0"



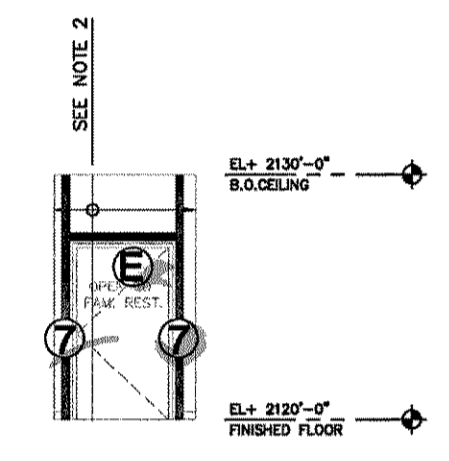
**D CORRIDOR**  
REF: SCALE: 1/4" = 1'-0"



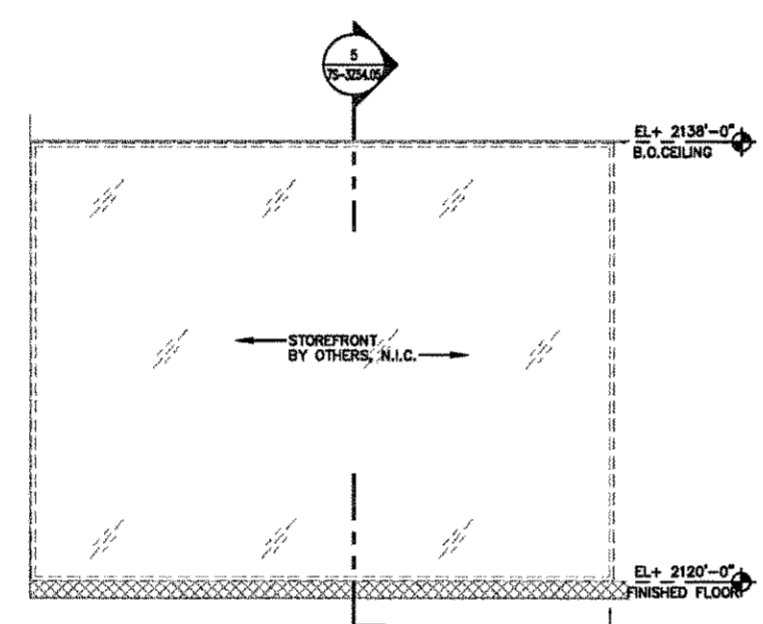
**E CORRIDOR**  
REF: SCALE: 1/4" = 1'-0"



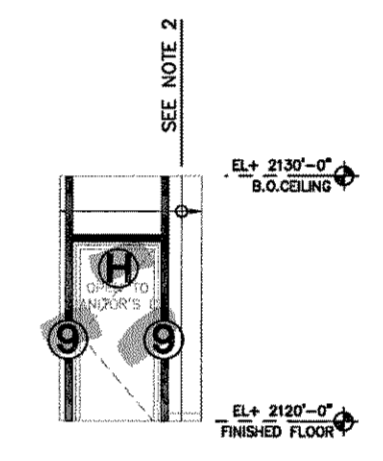
**F CORRIDOR**  
REF: SCALE: 1/4" = 1'-0"



**G CORRIDOR**  
REF: SCALE: 1/4" = 1'-0"



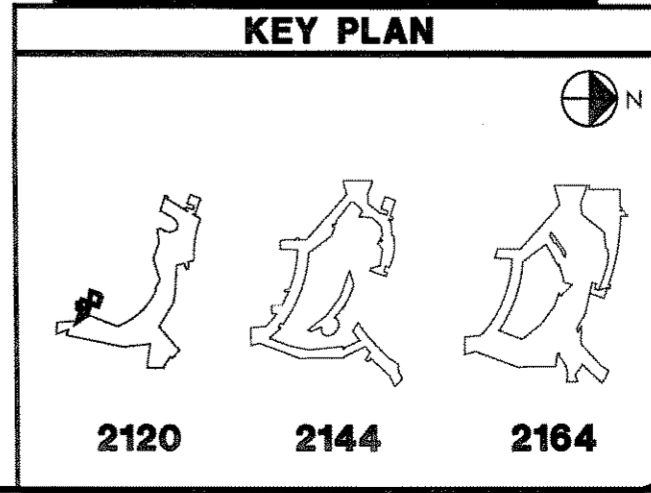
**K WALL 'S-W39'**  
REF: SCALE: 1/4" = 1'-0"



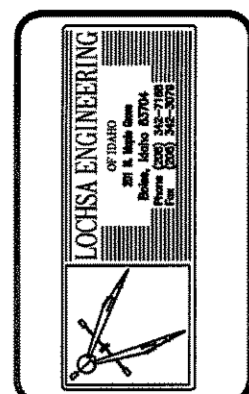
**N RESTROOM**  
REF: SCALE: 1/4" = 1'-0"

- NOTES:**
- See General Notes on sheet 7S-S0.01 and Typical Details on sheet 7S-5.01 and sheet 7S-5.02.
  - Typical framing shall be 600S137-33 at 16" oc. for stud length of 0'-0" to 21'-6" and 600S137-43 at 16" oc. for stud length from 21'-6" and greater, uno.
  - Typical box header above openings shall be 2-600S137-33 studs uno. See 14/7S-5.01.
  - Horizontal bridging shall be spaced evenly at 8'-0" oc maximum. See Typical Details.
  - Typical sill shall be 18 gage track of same width as wall studs uno. See 15/7S-5.01 for sill connection to jamb studs.
  - Typical jamb studs to be 2-600S137-33, uno. See 13/7S-5.01.

BOXED HEADER		BOXED JAMB	
MARK	SIZE	MARK	SIZE
A	2-600S137-43	1	2-600S137-43
B	3-600S137-43	2	2-600S137-33
C	2-362S162-33 WITH 362S200-43	3	3-600S137-43
D	2-600S137-33	4	600S137-33 WITH 600T125-43
E	2-600S162-54	5	4-600S200-68
F	2-1200S162-54	6	5-600S250-97
G	3-800S162-54	7	3-600S162-54
H	2-600S137-54	8	HSS 6x6x1/4
		9	2-600S137-54



DESCRIPTION	REVISION	DATE	BY	CHKD	APP'D	RE	MC	RR	RP	NR



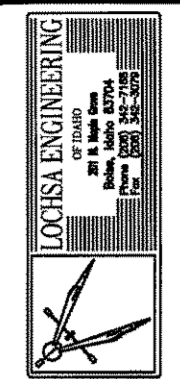
DATE	BY	REVISIONS

**RAYMOND**  
S I N C E 1 9 3 8  
THEMED ENVIRONMENT GROUP  
6488 S. VALLEY VIEW BLVD.  
Las Vegas, Nevada 89118  
Phone: (702) 891-5875  
Fax: (702) 891-5876

**SOBELLA RETAIL CITY CENTER**  
LAS VEGAS, NEVADA

TYPE ELEVATIONS  
AREA  
AREA NUMBER  
PACKAGE "7"  
SCALE AS NOTED  
DRAWN BY  
JOB NUMBER  
2 0 6 3 4 3  
SHEET NUMBER  
**7S**  
**3Z24.05B**  
AREA 3



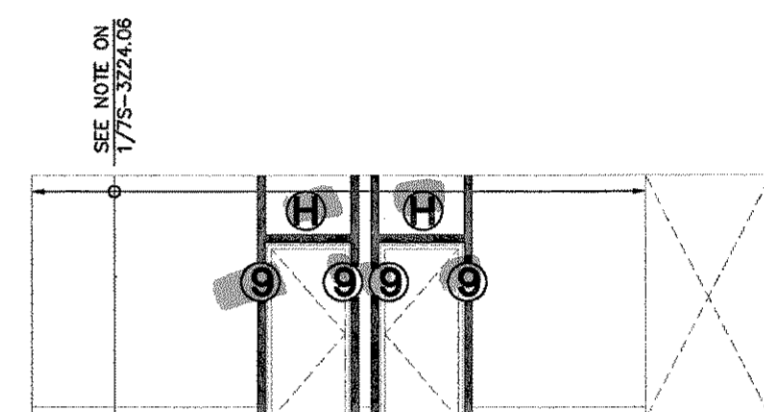


REVISIONS	NO.	DATE	BY
	1	07-11-08	CLD

**RAYMOND**  
SINCE 1938  
THEMED ENVIRONMENT GROUP  
CASE & VALLEY VIEW BLDG.  
Las Vegas, Nevada 89108  
BUTTE H  
Phone: (702) 881-8876  
Fax: (702) 881-8876

**SOBELLA RETAIL CITY CENTER**  
LAS VEGAS, NEVADA

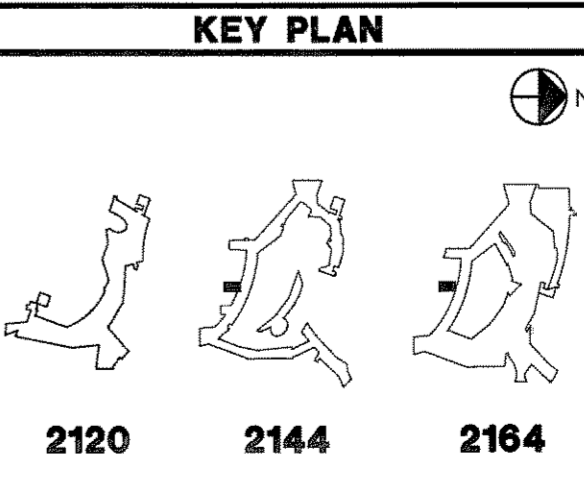
TYPE	ELEVATIONS
AREA	AREA
AREA NUMBER	PACKAGE "7"
SCALE	AS NOTED
DRAWN BY	AD
JOB NUMBER	2 0 6 3 4 3
SHEET NUMBER	7S
	<b>3Z24.06B</b>
	AREA 3



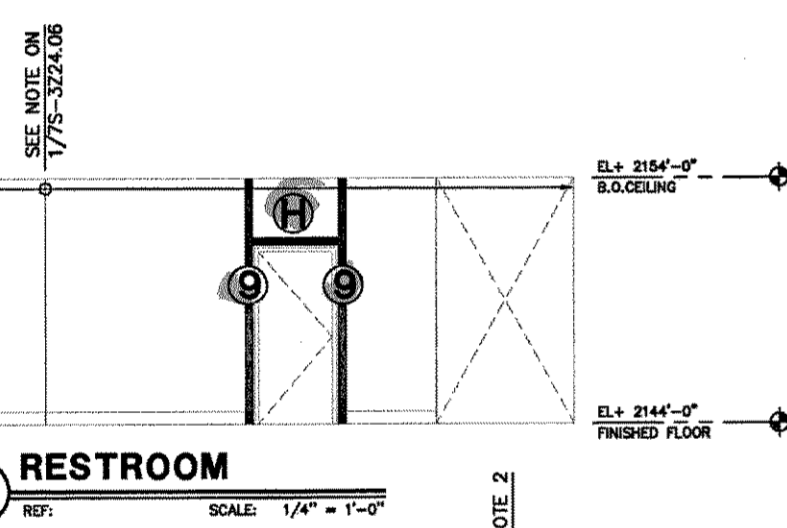
**P RESTROOM**  
REF: SCALE: 1/4" = 1'-0"

MGM MIRAGE CITYCENTER BLOCK C UNIVERSAL SUBMITTAL REVIEW STAMP (WATERMARK)		SUBMITTAL NO: 08-06-05-00-0		SUBMITTAL NO: 08-06-05-00-0	
DESCRIPTION	DATE RECEIVED	DATE ACTUAL	RE	MG	RR
ALL					
AD					
BD					
CD					
ED					
FD					
GD					
HD					
ID					
JD					
KD					
LD					
MD					
ND					
OD					
PD					
QD					
RD					
SD					
TD					
UD					
VD					
WD					
XD					
YD					
ZD					

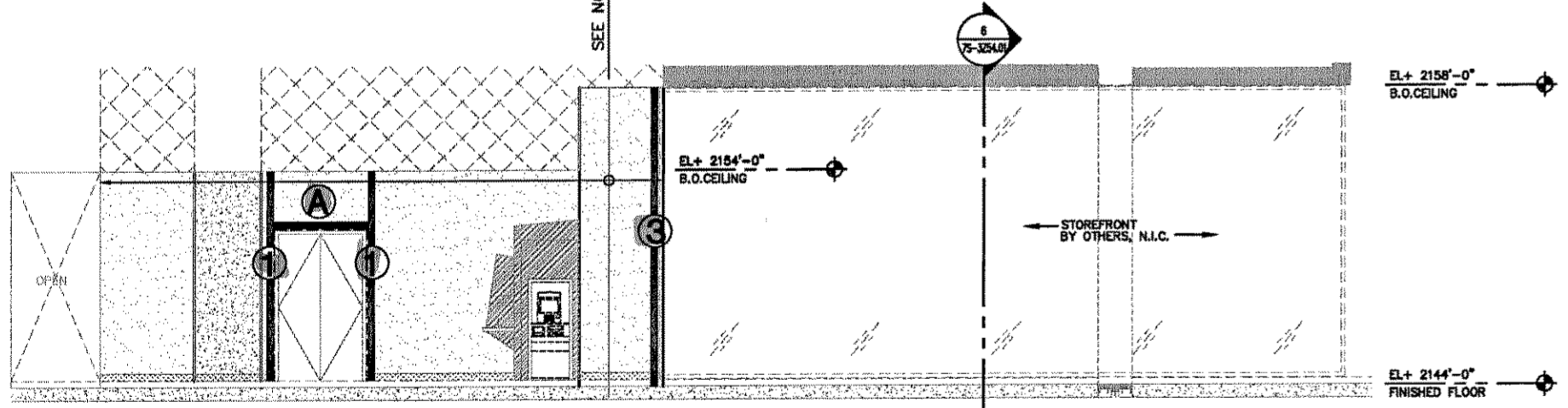
METAL FRAMING SCHEDULE			
BOXED HEADER		BOXED JAMB	
MARK	SIZE	MARK	SIZE
A	2-600S137-43	1	2-600S137-43
B	3-600S137-43	2	2-600S137-33
C	2-362S162-33 WITH 362S200-43	3	3-600S137-43
D	2-600S137-33	4	600S137-33 WITH 600T125-43
E	2-600S162-54	5	4-600S200-68
F	2-1200S162-54	6	5-600S250-97
G	3-800S162-54	7	3-600S162-54
H	2-600S137-54	8	HSS 6x6x1/4
		9	2-600S137-54



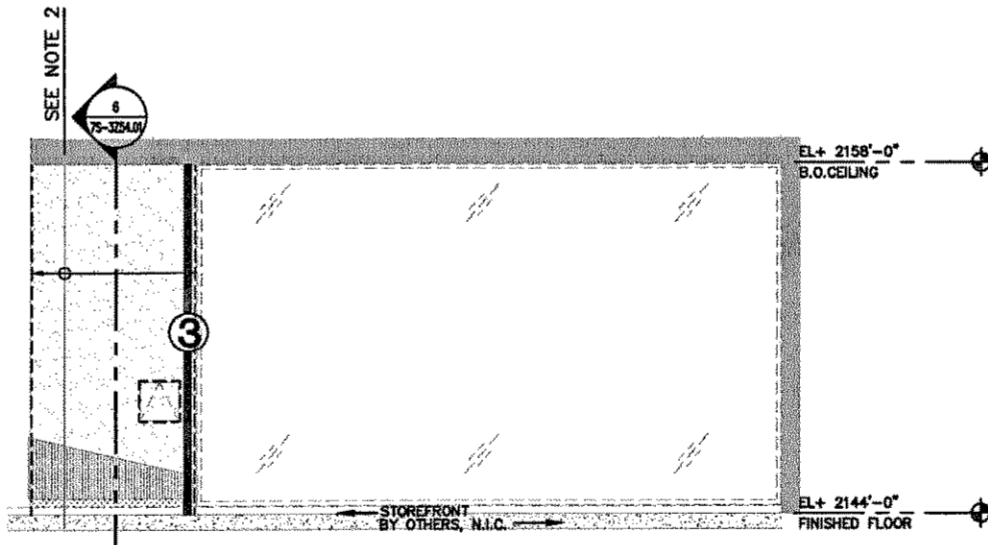
- NOTES:**
- See General Notes on sheet 7S-50.01 and Typical Details on sheet 7S-5.01 and sheet 7S-5.02.
  - Typical framing shall be 600S137-33 at 16" oc. for stud length of 0'-0" to 21'-6" and 600S137-43 at 16" oc. for stud length from 21'-6" and greater, uno.
  - Typical box header above openings shall be 2-600S137-33 studs uno. See 14/7S-5.01.
  - Horizontal bridging shall be spaced evenly at 8'-0" oc maximum. See Typical Details.
  - Typical sill shall be 18 gage track of same width as wall studs uno. See 15/7S-5.01 for sill connection to jamb studs.
  - Typical jamb studs to be 2-600S137-33, uno. See 13/7S-5.01.



**Q RESTROOM**  
REF: SCALE: 1/4" = 1'-0"

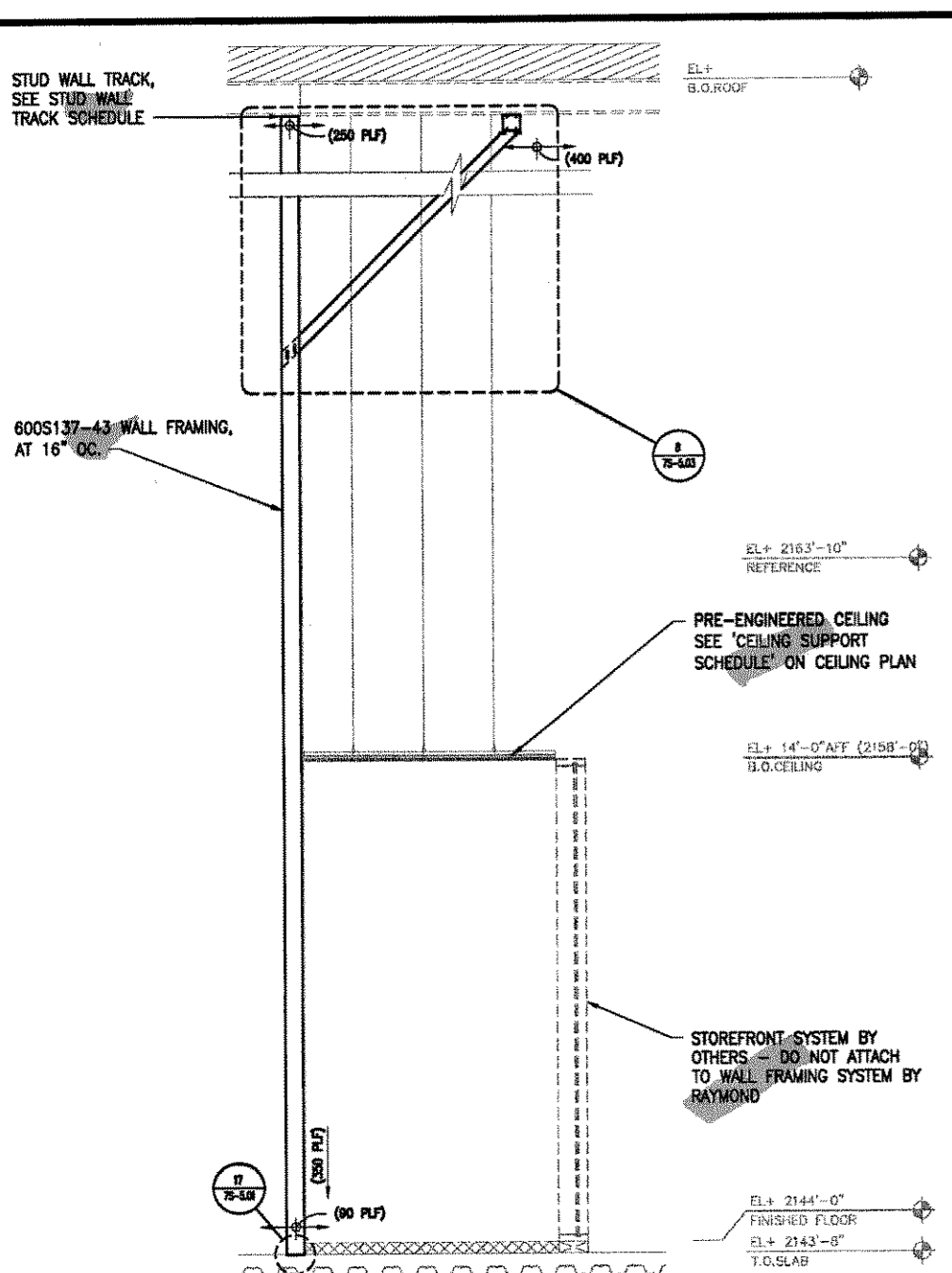


**V WALL '01-W17F'**  
REF: SCALE: 1/4" = 1'-0"

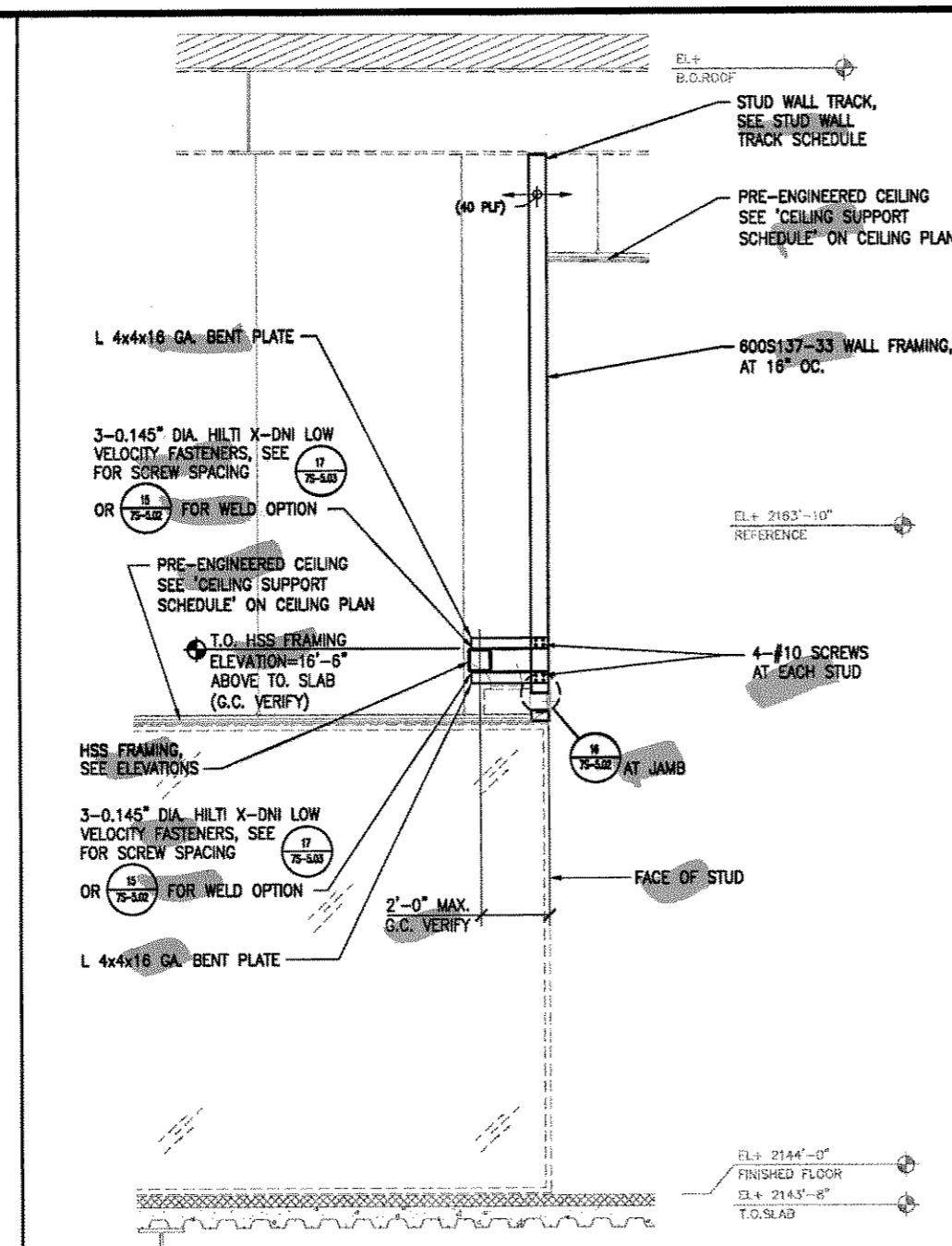


**W WALL '01-W17E'**  
REF: SCALE: 1/4" = 1'-0"

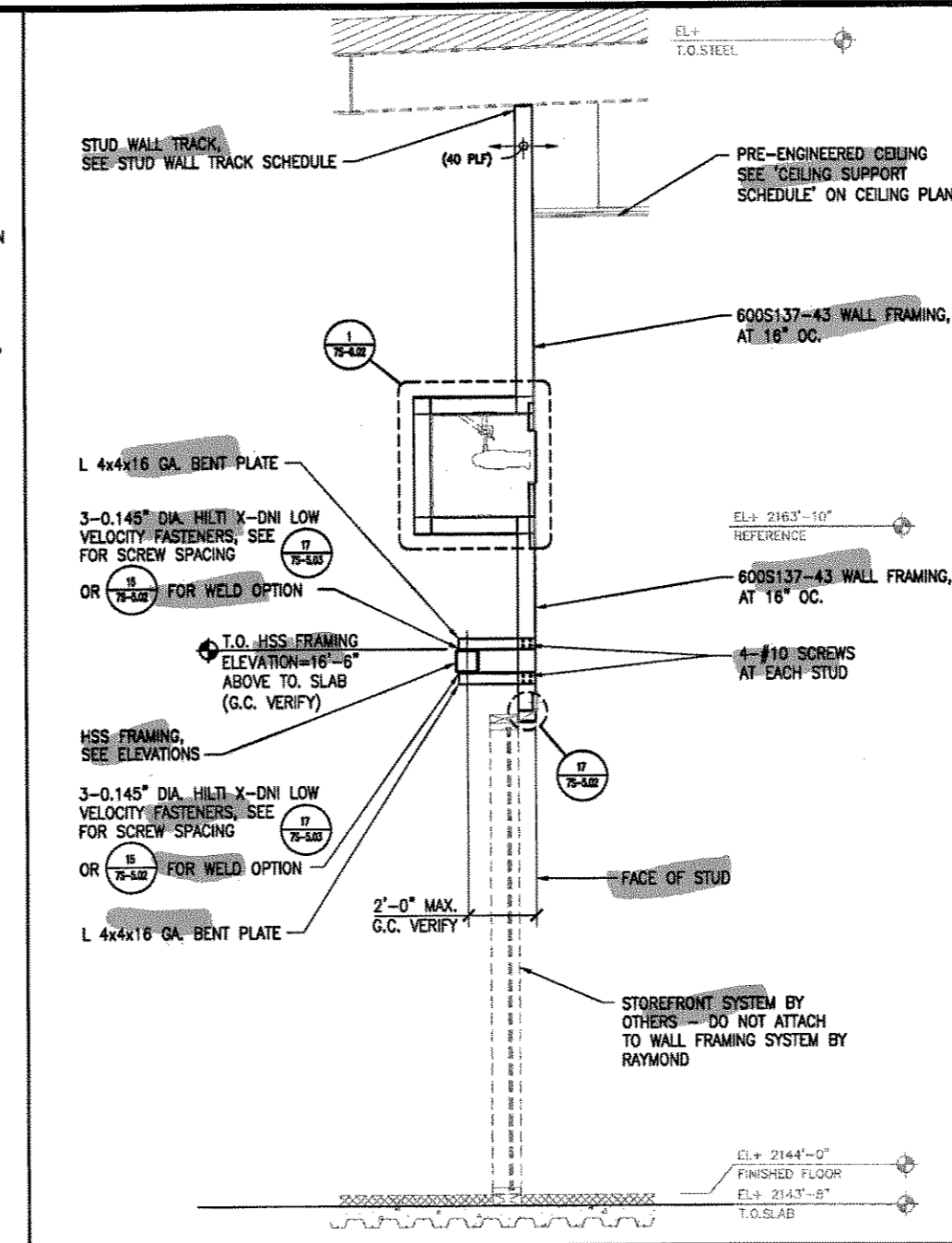




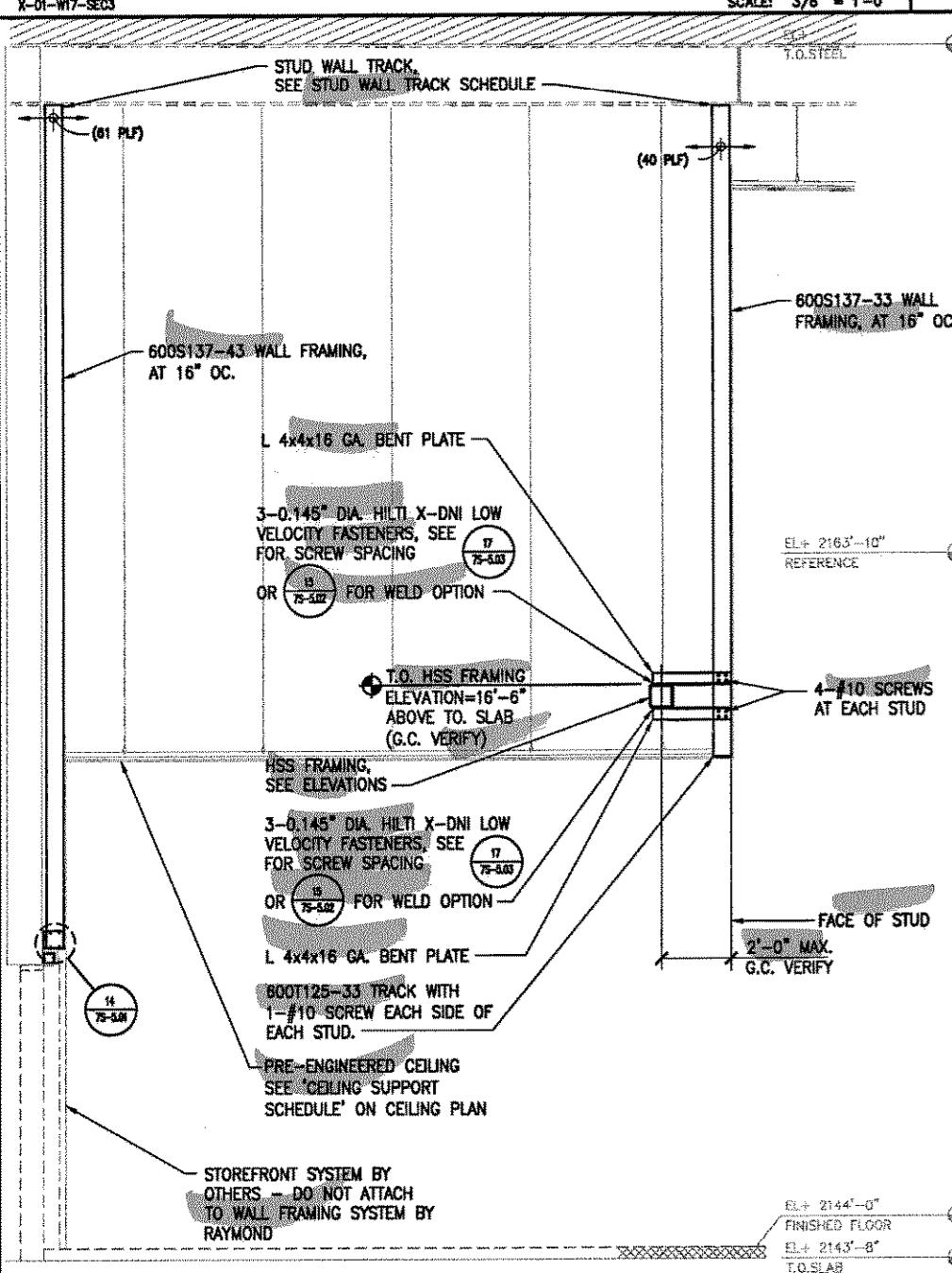
**WALL SECTION - '01-W17'**  
X-01-W17-SEC3 SCALE: 3/8" = 1'-0"



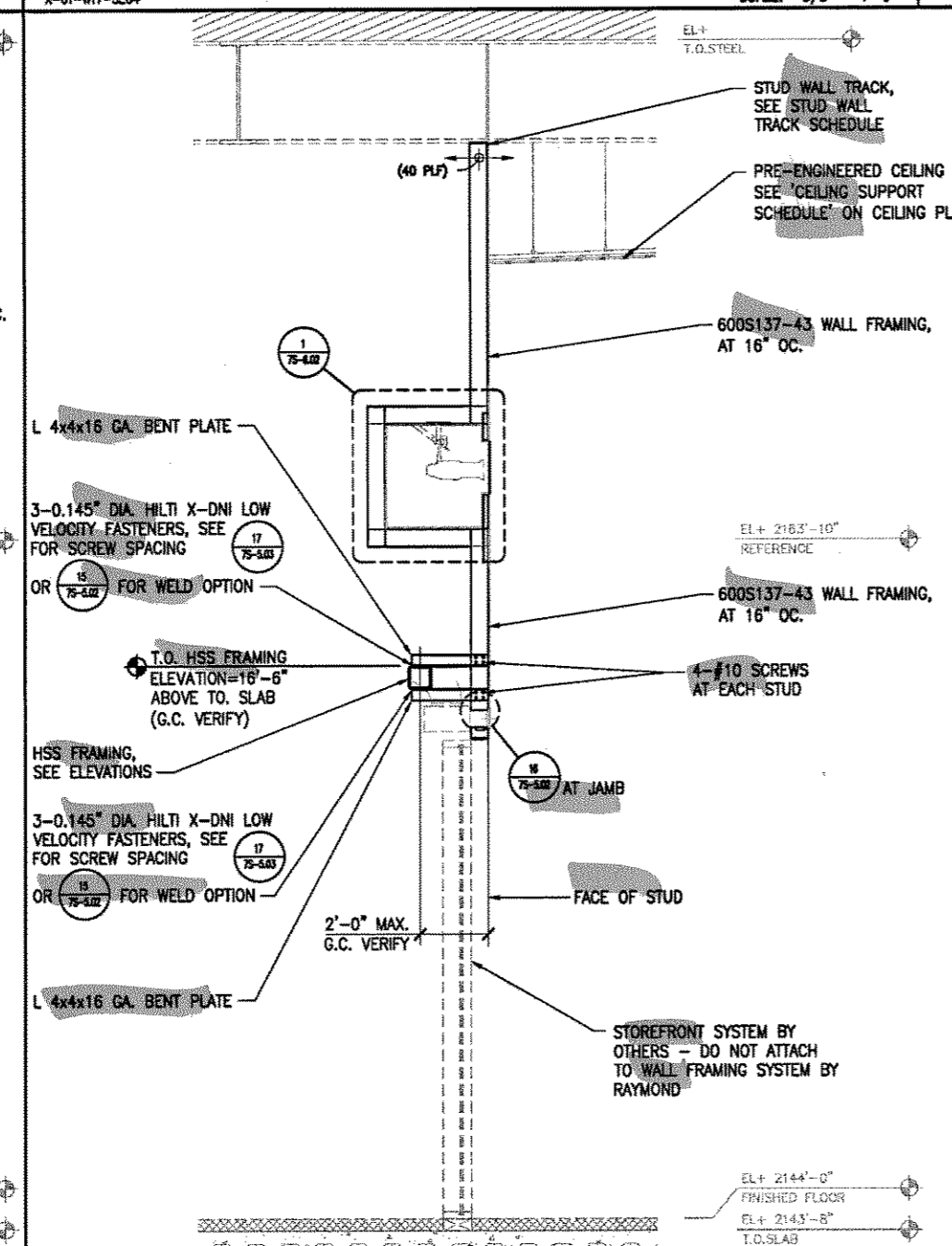
**WALL SECTION - '01-W17'**  
X-01-W17-SEC4 SCALE: 3/8" = 1'-0"



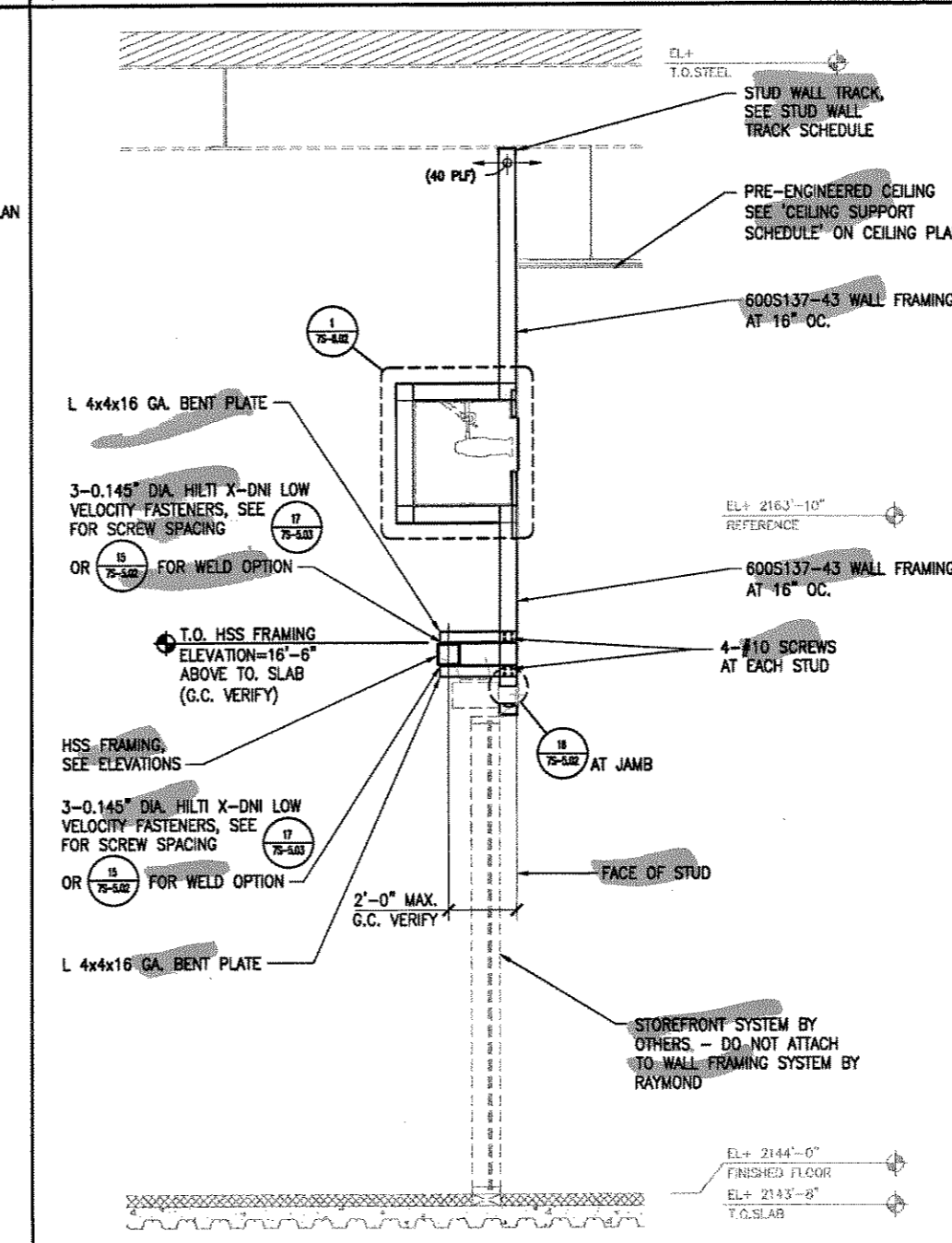
**WALL SECTION - '01-W17'**  
X-01-W17-SEC2 SCALE: 3/8" = 1'-0"



**WALL SECTION - '01-W17'**  
X-01-W17-SEC5 SCALE: 3/8" = 1'-0"



**WALL SECTION - '01-W17'**  
X-01-W17-SEC7 SCALE: 3/8" = 1'-0"



**WALL SECTION - '01-W17'**  
X-01-W17-SEC1 SCALE: 3/8" = 1'-0"

**STUD WALL TRACK SCHEDULE**

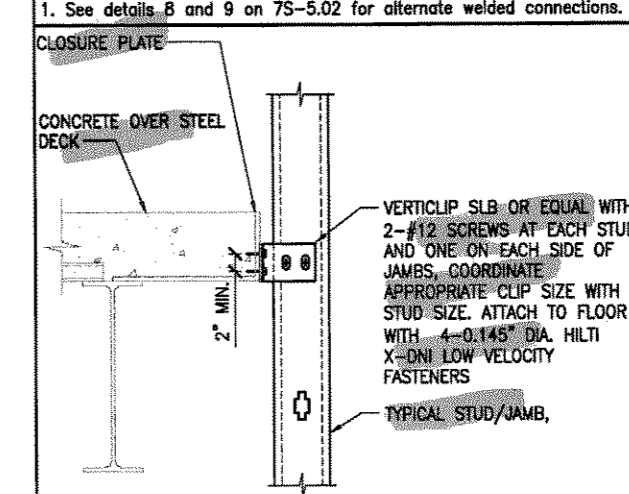
DISTANCE BETWEEN BEAM SUPPORTS FOR TOP TRACK	6" STUD WALL TRACK SIZE	DETAIL
0'-0" TO 2'-0"	600T250-33	18/75-5.01
2'-0" TO 4'-0"	600T250-43	18/75-5.01
4'-0" TO 8'-0"	600T250-54	18/75-5.01
8'-0" AND GREATER	600T250-68	18/75-5.01

Note:  
1. See detail 5/75-5.02 for alternate top track connection.

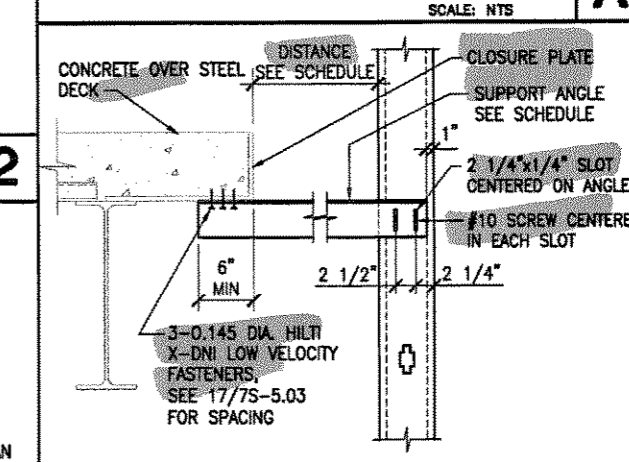
**CONNECTION SCHEDULE**

WALL DISTANCE FROM CLOSURE PLATE OR BEAM	CONNECTION TYPE	DETAIL
0'-0" TO 0'-8"	VERTICLIP SLB	A
0'-8" TO 4'-0"	L4x4x16 GA.	B
4'-0" TO 8'-0"	400S137-33	C

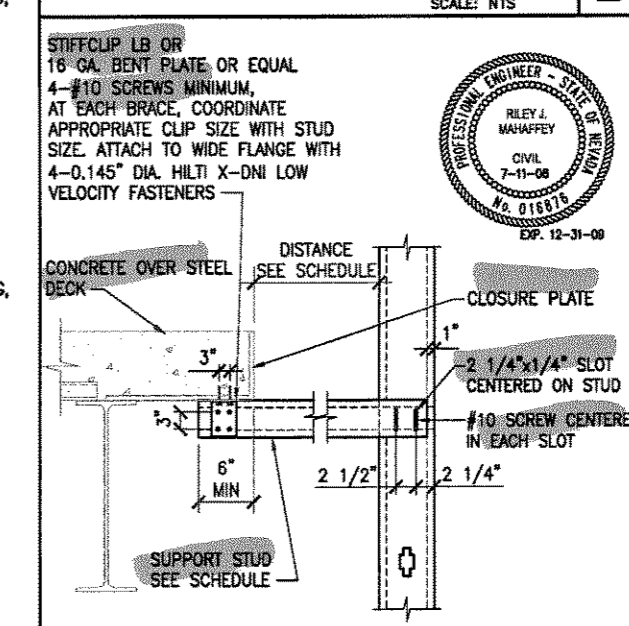
Note:  
1. See details B and 9 on 75-5.02 for alternate welded connections.



**VERTICAL SLIP CONN.** A  
SCALE: NTS



**ANGLE SLIP CONNECTION** B  
SCALE: NTS



**STUD SLIP CONNECTION** C  
SCALE: NTS

NO.	DESCRIPTION	DATE	BY	CHKD.	APP'D.

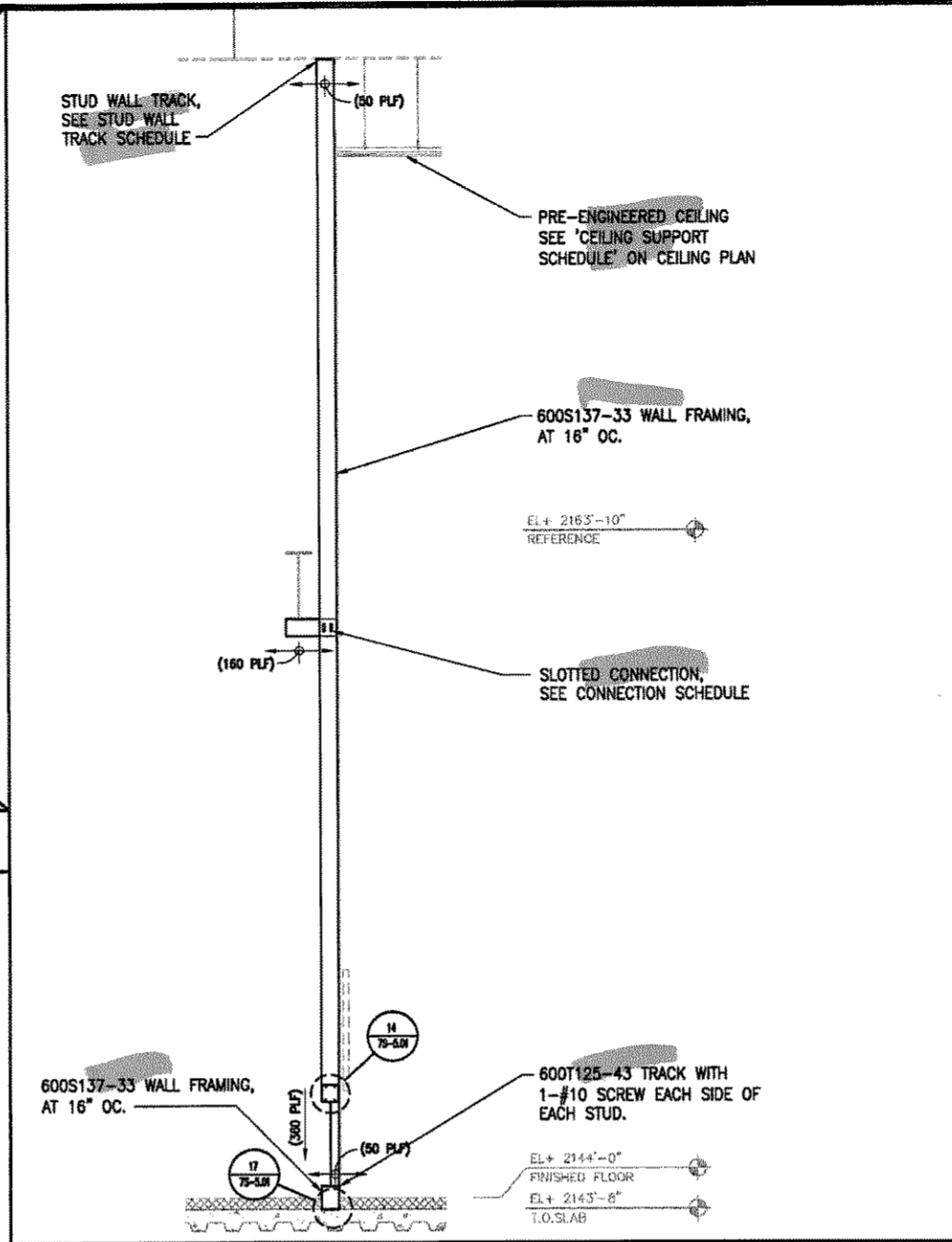
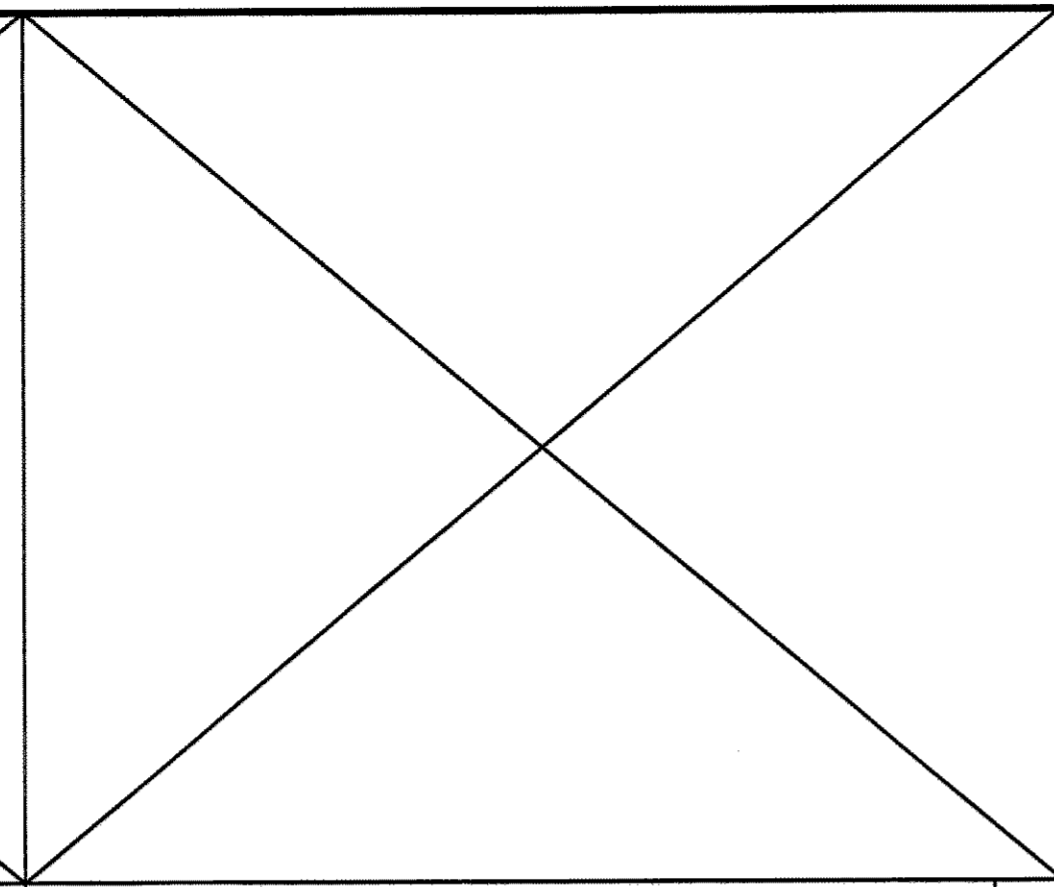
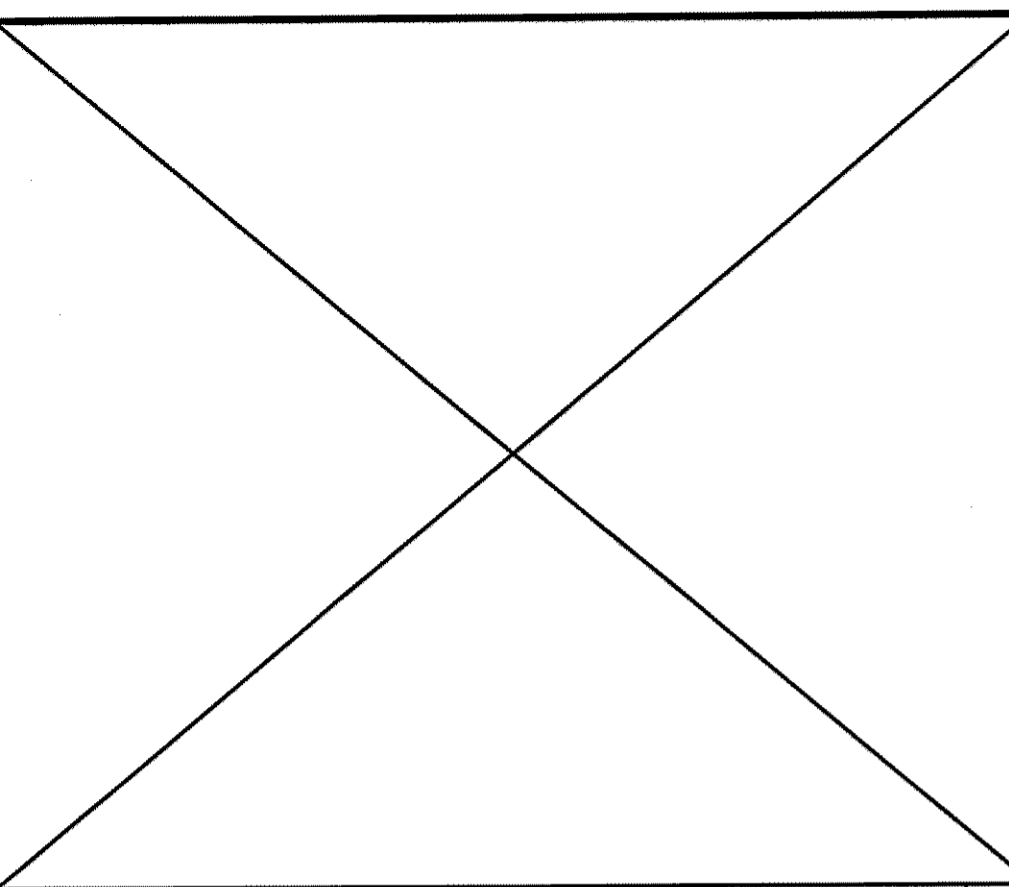
**LOUISA ENGINEERING**  
1800 S. LAS VEGAS BLVD., SUITE 100  
LAS VEGAS, NV 89102  
PHONE: 702.882.8676  
FAX: 702.882.8676

DRAWING STATUS	DATE	NO.	REVISIONS
PRELIMINARY			
SUBMITTED			
APPROVED			
FINAL CHECK			
ISSUED FOR FABRICATION			

**RAYMOND**  
SINCE 1936  
THEMED ENVIRONMENT GROUP  
6488 S. VALLEY VIEW BLVD.  
LAS VEGAS, NEVADA 89119  
PHONE: 702.882.8676  
FAX: 702.882.8676

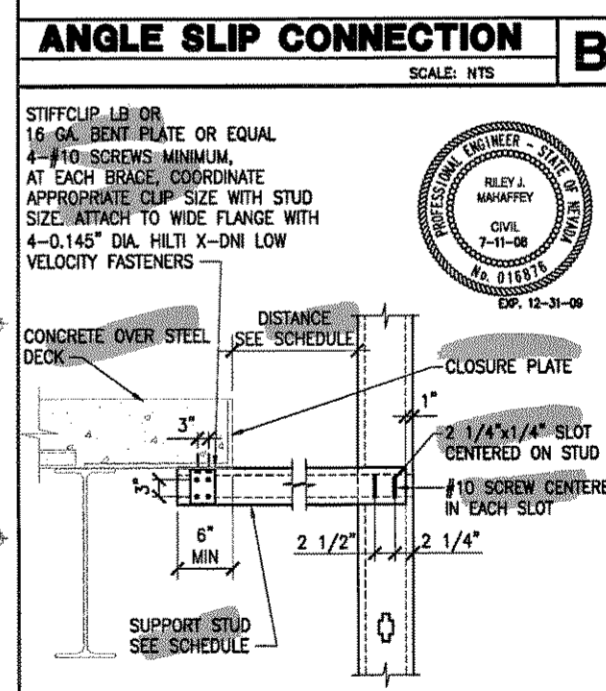
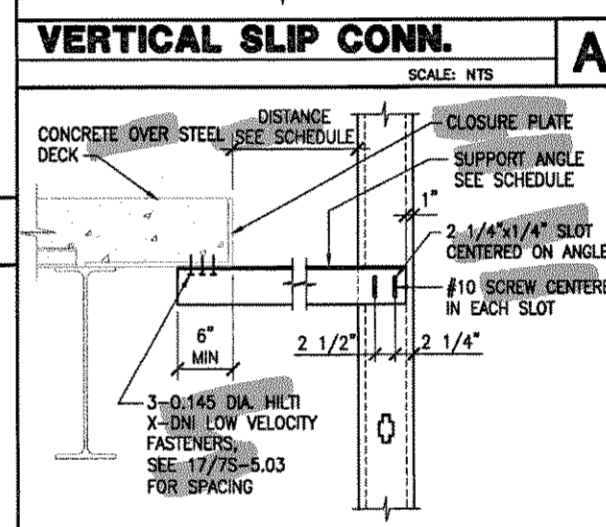
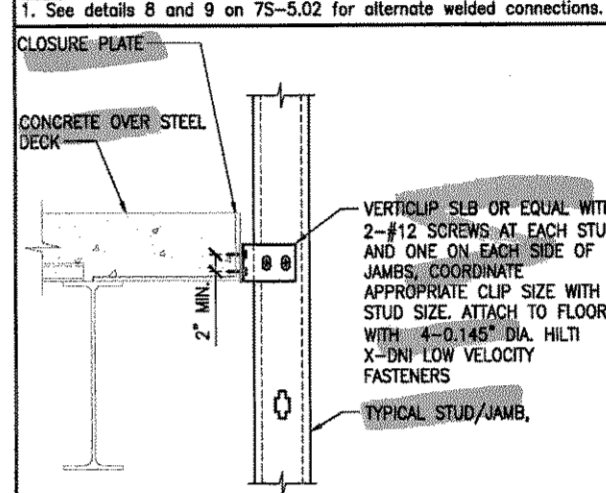
**SOBELLA RETAIL CITY CENTER**  
LOCATION  
**LAS VEGAS, NEVADA**

TYPE SECTIONS  
AREA  
AREA NUMBER  
PACKAGE "7"  
SCALE  
AS NOTED  
DRAWN BY  
CJD  
JOB NUMBER  
2.0.0.3.4.3  
SHEET NUMBER  
**7S**  
**3Z54.01**  
**AREA 3**



STUD WALL TRACK SCHEDULE		
DISTANCE BETWEEN BEAM SUPPORTS FOR TOP TRACK	6" STUD WALL TRACK SIZE	DETAIL
0'-0" TO 2'-0"	600T250-33	18/75-5.01
2'-0" TO 4'-0"	600T250-43	18/75-5.01
4'-0" TO 8'-0"	600T250-54	18/75-5.01
8'-0" AND GREATER	600T250-68	18/75-5.01

CONNECTION SCHEDULE		
WALL DISTANCE FROM CLOSURE PLATE OR BEAM	CONNECTION TYPE	DETAIL
0'-0" TO 0'-8"	VERTICLIP SLB	A
0'-8" TO 4'-0"	L4x4x16 GA.	B
4'-0" TO 8'-0"	400S137-33	C



REVISIONS	
NO.	DESCRIPTION

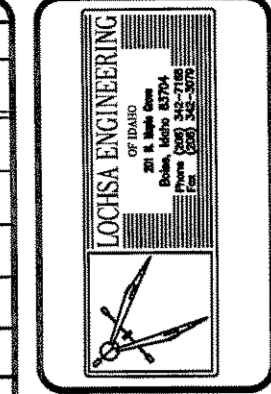
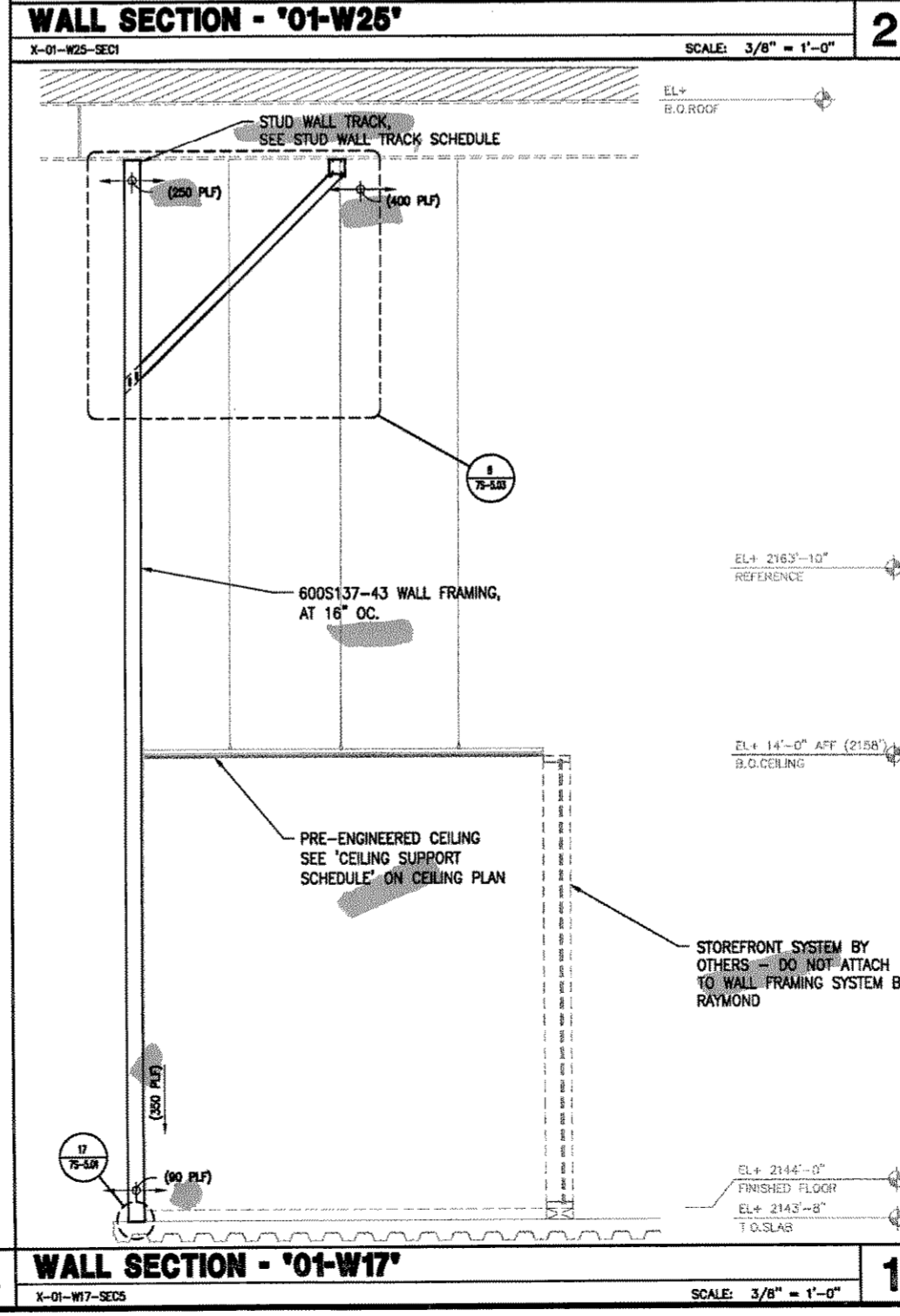
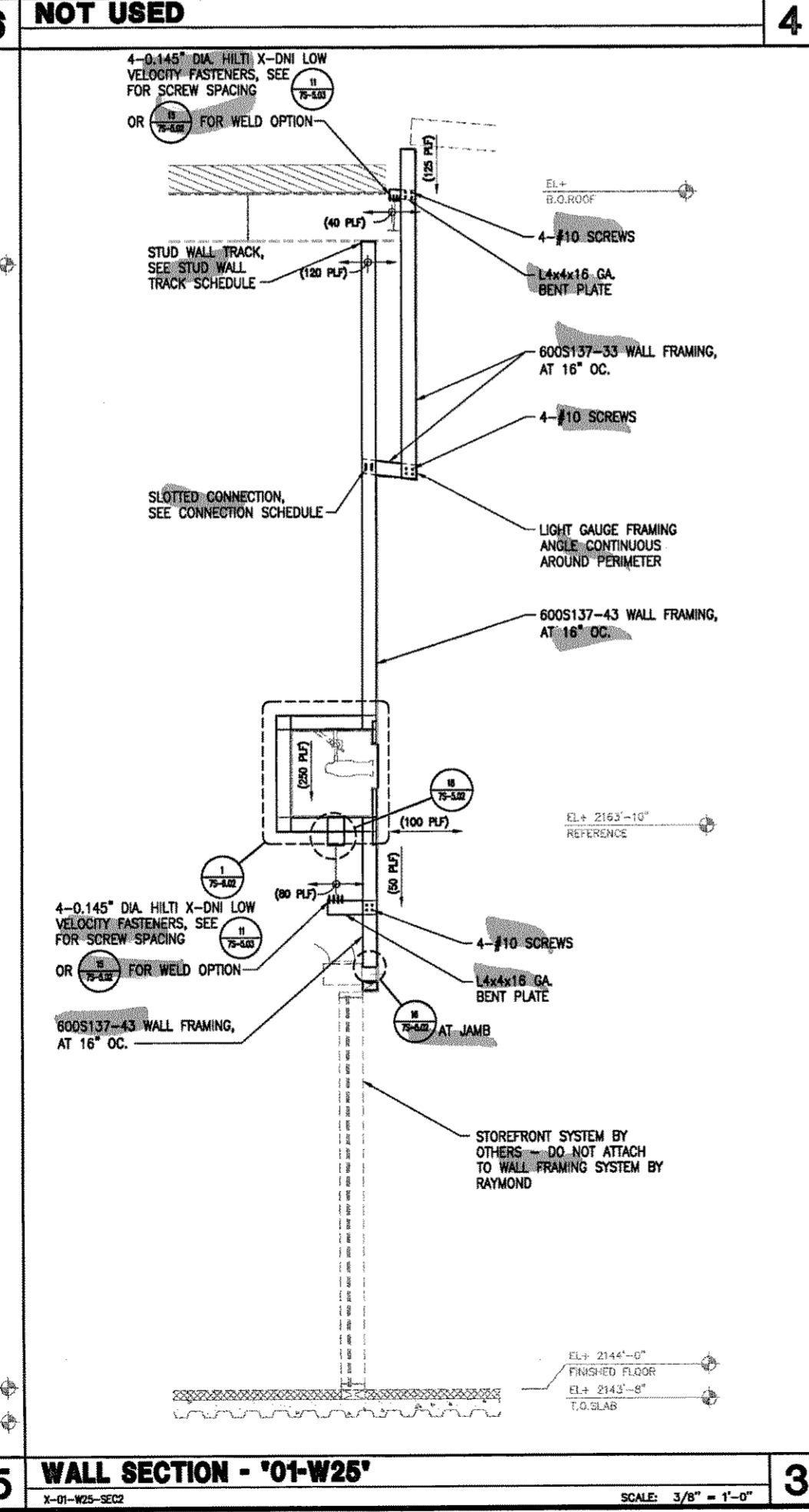
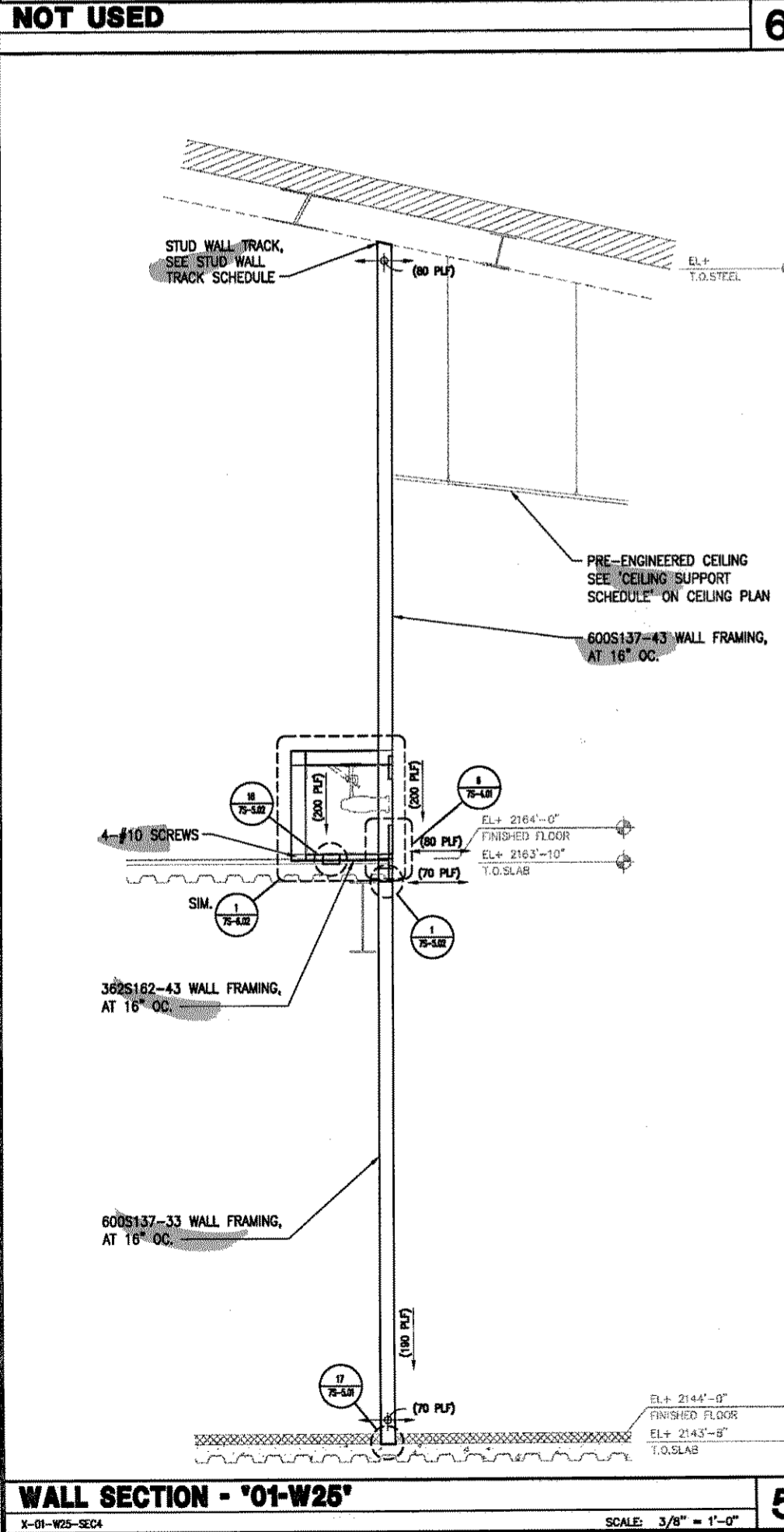
DATE	BY

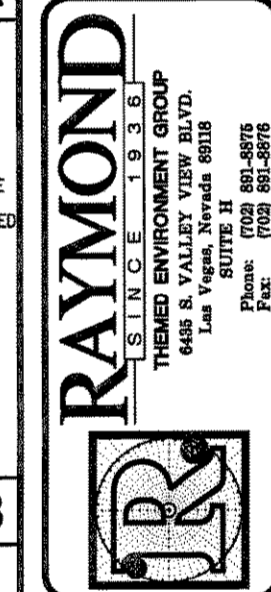
DRAWING STATUS	DATE	NO.

DATE	BY



DRAWING STATUS	DATE	NO.



PROJECT: SOBELLA RETAIL CITY CENTER  
 LOCATION: LAS VEGAS, NEVADA

TYPE SECTIONS  
 AREA  
 AREA NUMBER  
 PACKAGE "7"  
 SCALE  
 AS NOTED  
 DRAWN BY  
 CID  
 JOB NUMBER  
 2 0 8 3 4 3  
 SHEET NUMBER  
**7S**  
**3Z54.02**  
 AREA 3

WALL SECTION - '01-W25' SCALE: 3/8" = 1'-0"

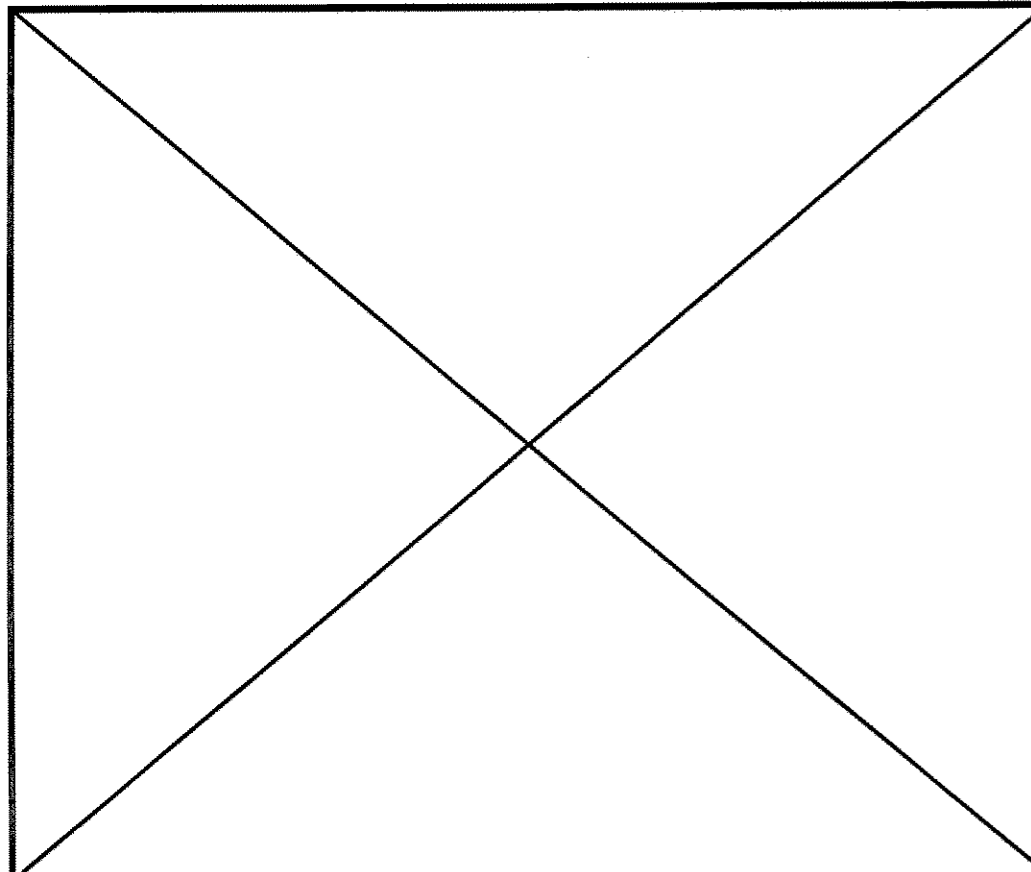
WALL SECTION - '01-W25' SCALE: 3/8" = 1'-0"

WALL SECTION - '01-W17' SCALE: 3/8" = 1'-0"

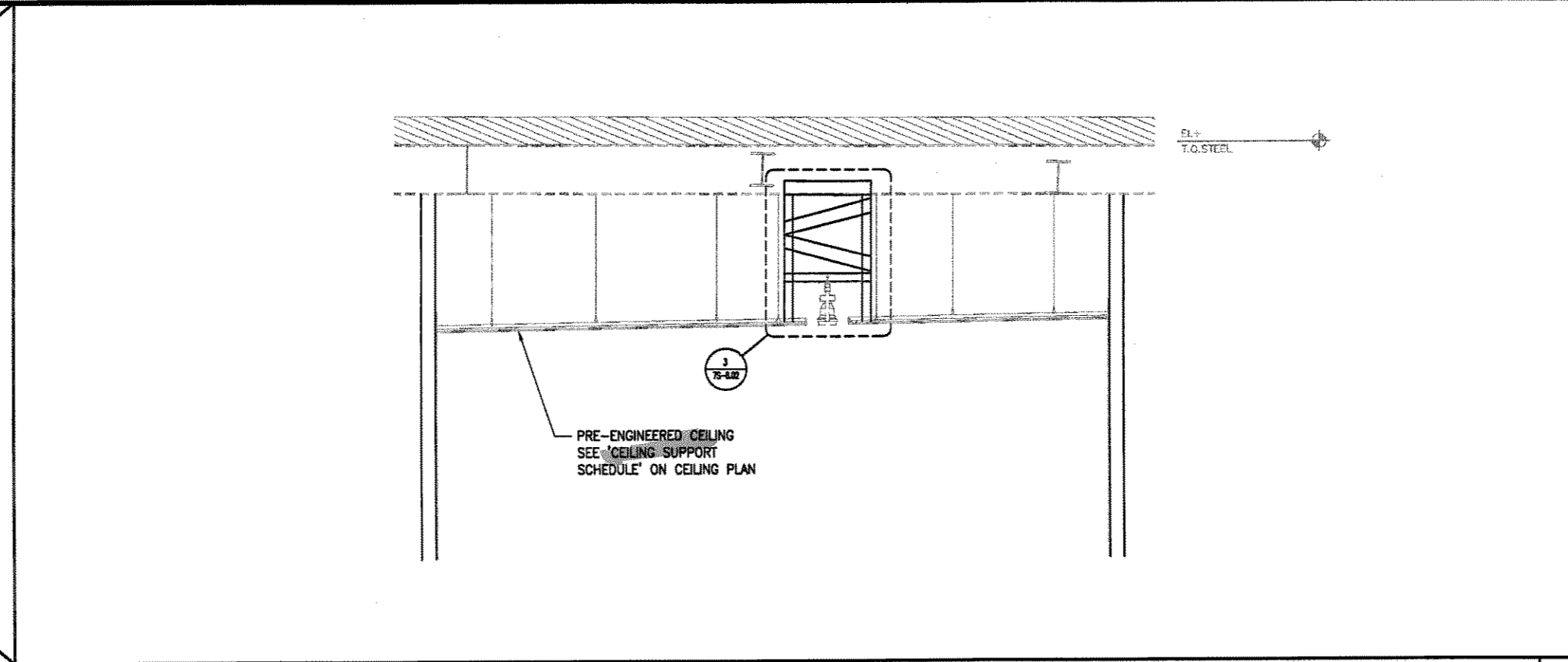
WALL SECTION - '01-W25' SCALE: 3/8" = 1'-0"

UE JOB#08456

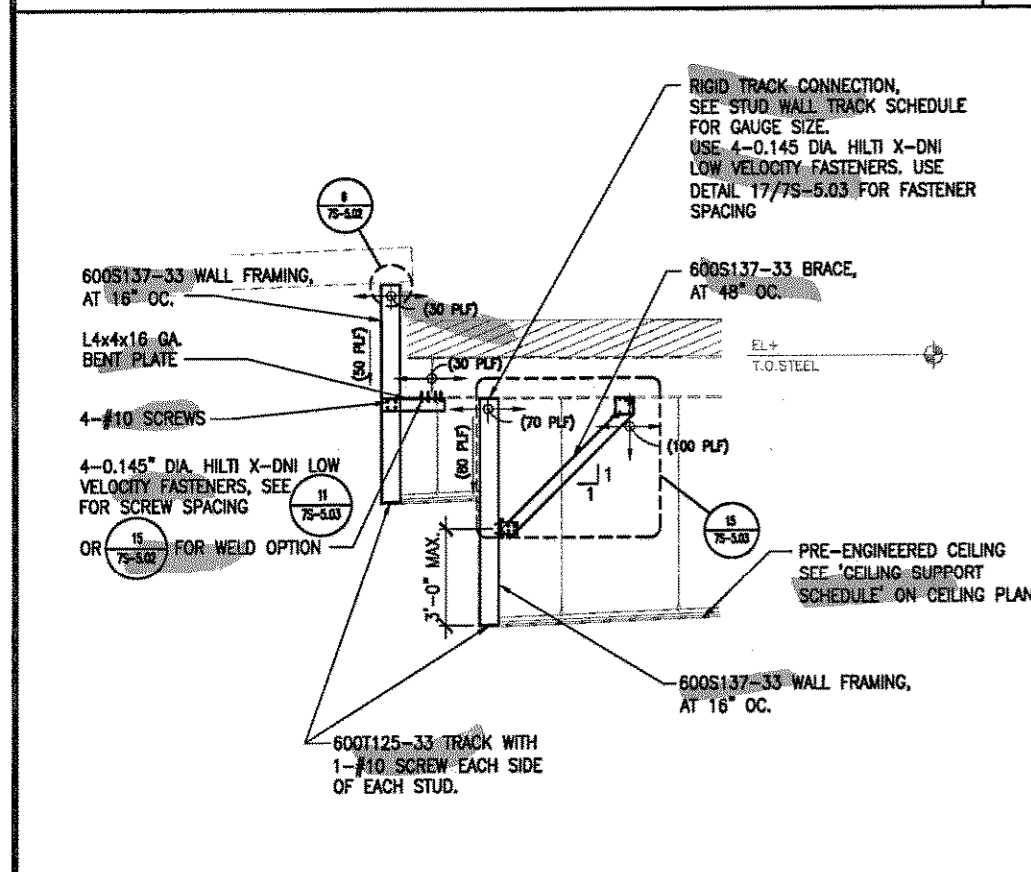




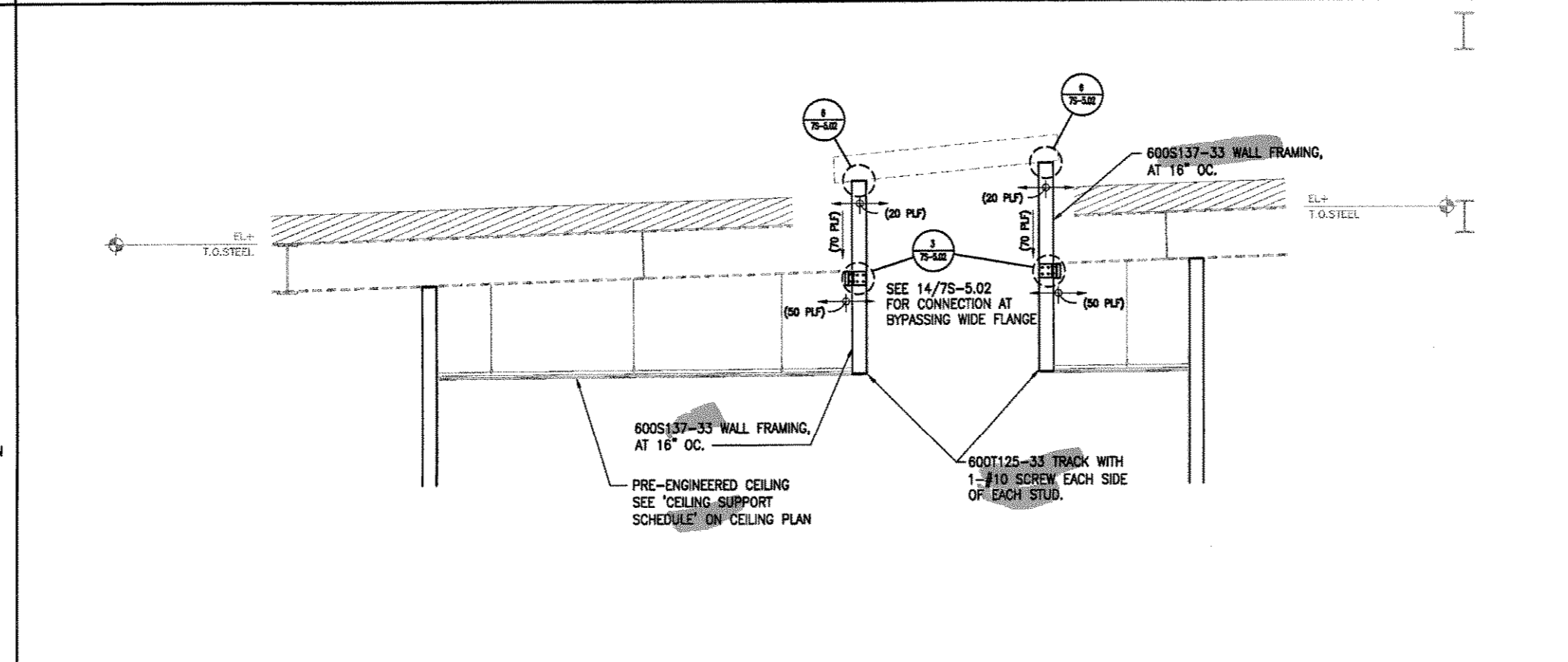
**NOT USED**



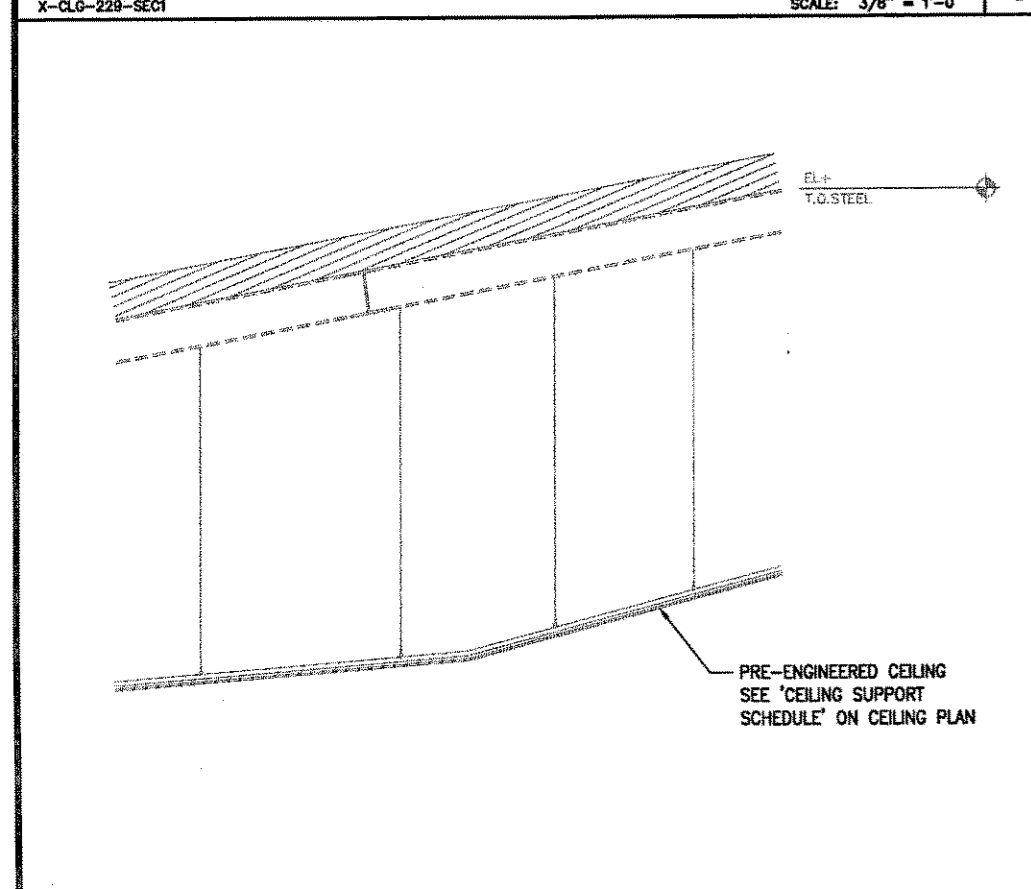
**3 CEILING SECTION - '230'**  
X-CLG-230-SEC2 SCALE: 3/8" = 1'-0"



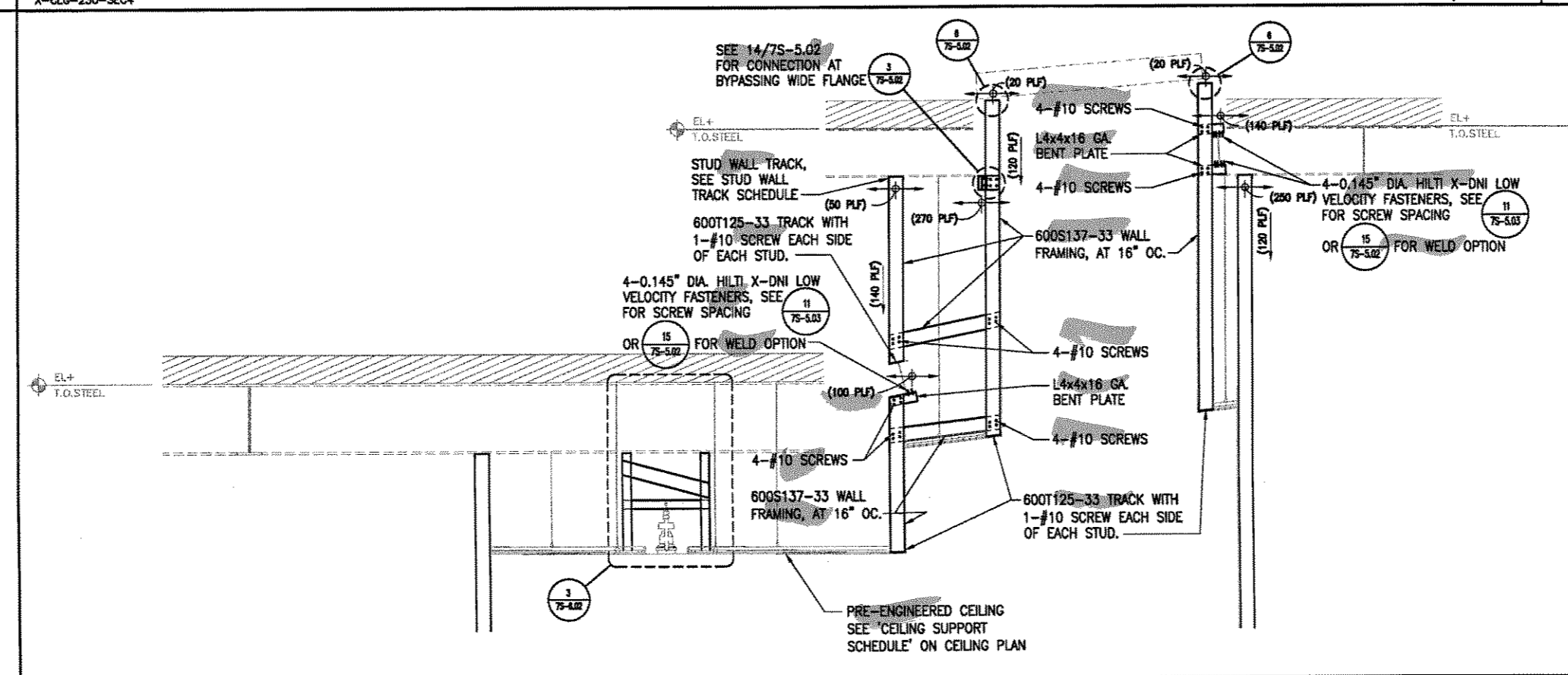
**5 CEILING SECTION - '229'**  
X-CLG-229-SEC1 SCALE: 3/8" = 1'-0"



**2 CEILING SECTION - '230'**  
X-CLG-230-SEC4 SCALE: 3/8" = 1'-0"



**4 CEILING SECTION - '230'**  
X-CLG-230-SEC1 SCALE: 3/8" = 1'-0"



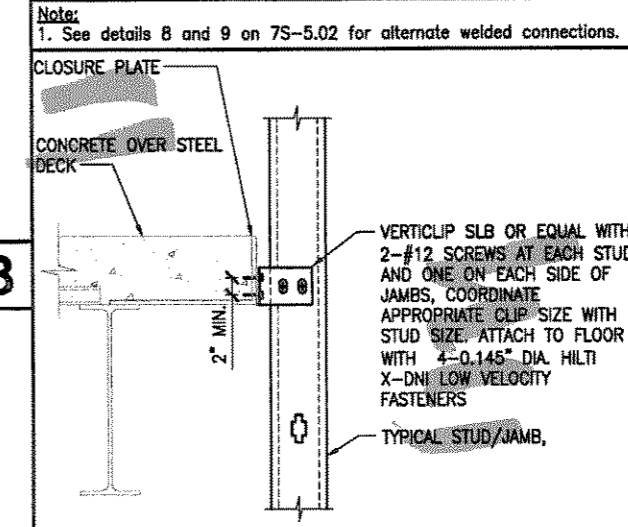
**1 CEILING SECTION - '229' & '230'**  
X-CLG-230-SEC3 SCALE: 3/8" = 1'-0"

**STUD WALL TRACK SCHEDULE**

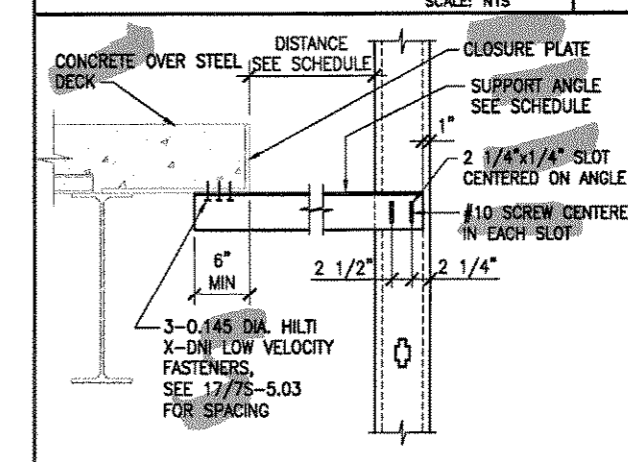
DISTANCE BETWEEN BEAM SUPPORTS FOR TOP TRACK	6" STUD WALL TRACK SIZE	DETAIL
0'-0" TO 2'-0"	600T250-33	18/75-5.01
2'-0" TO 4'-0"	600T250-43	18/75-5.01
4'-0" TO 8'-0"	600T250-54	18/75-5.01
8'-0" AND GREATER	600T250-68	18/75-5.01

**CONNECTION SCHEDULE**

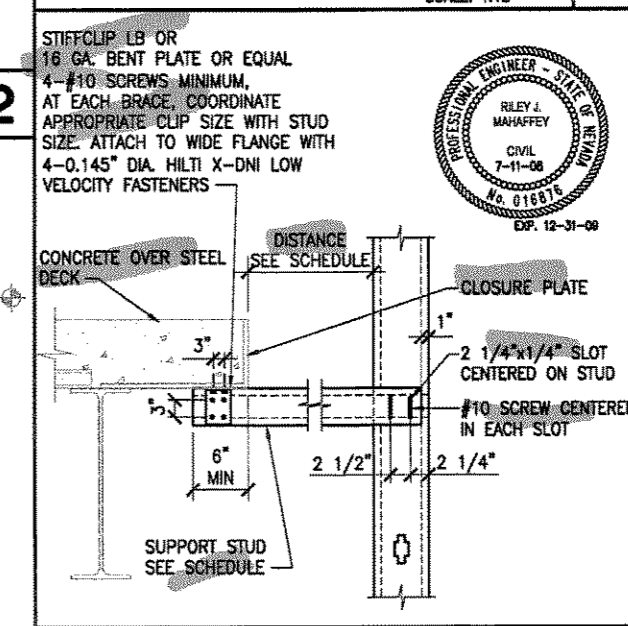
WALL DISTANCE FROM CLOSURE PLATE OR BEAM	CONNECTION TYPE	DETAIL
0'-0" TO 0'-8"	VERTICLIP SLB	A
0'-8" TO 4'-0"	L4x4x16 GA.	B
4'-0" TO 8'-0"	400S137-33	C



**A VERTICAL SLIP CONN.**  
SCALE: NTS



**B ANGLE SLIP CONNECTION**  
SCALE: NTS

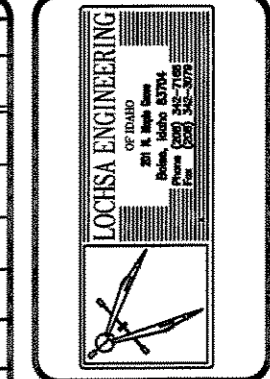


**C STUD SLIP CONNECTION**  
SCALE: NTS

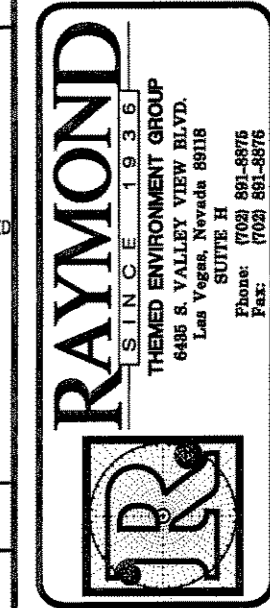
REVISION	DATE	BY	DESCRIPTION

NO.	DATE	BY	DESCRIPTION



DRAWING STATUS	DATE	NO.	REVISIONS
PRELIMINARY			
SUBMITTED			
APPROVED			
RED LINE CHANGES COMPLETED			
FINAL CHECK			
ISSUED FOR FABRICATION			



**PROJECT**  
SOBELLA RETAIL CITY CENTER  
**LOCATION**  
LAS VEGAS, NEVADA

TYPE	SECTION
AREA	
AREA NUMBER	
PACKAGE	
SCALE	
AS NOTED	
DRAWN BY	
JOB NUMBER	
206343	
SHEET NUMBER	
7S	
3Z54.04	
AREA 3	





SHAPE	DESIGNATION	FLANGE WIDTH
S-SECTIONS	S125	1.25"
	S137	1.375"
	S162	1.625"
U-SECTIONS	S200	2"
	S250	2.5"
F-SECTIONS	U50	.50"
	F125	1.25"
T-SECTIONS	T125	1.25"
	T150	1.5"
	T200	2"
	T250	2.5"

EXAMPLE CALL OUT: 600S162-54  
600: SIZE = 6"  
S: SECTION DESIGNATION (STYLE) = S STUD  
162: 1.625" FLANGE WIDTH  
54: .054" THICKNESS  
REFER TO STEEL STUD MANUFACTURERS ASSOCIATION

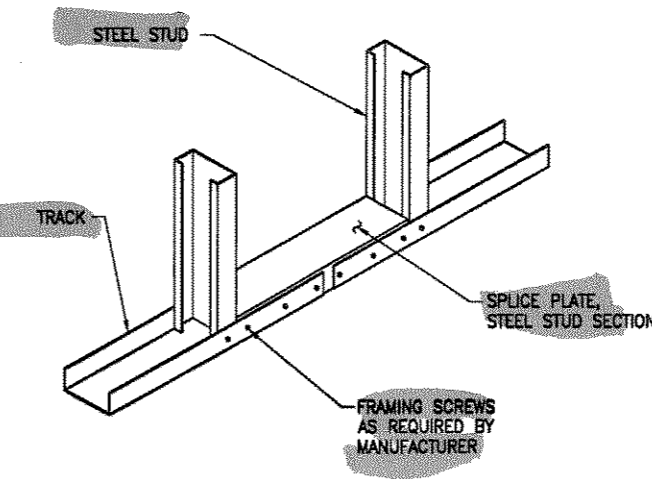
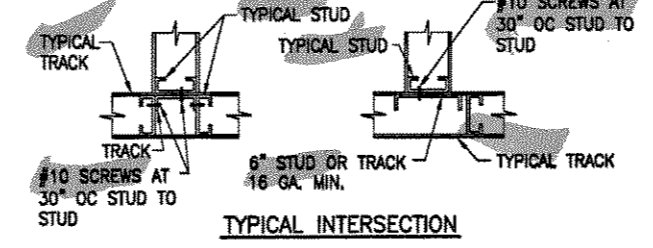
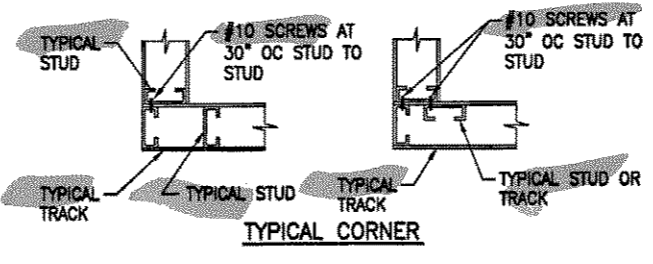
SECTION THICKNESS (mils) (in.) (ga.)	'A' WELD SIZE (in.) (kts)	Fy (ksi)	Fu (ksi)		
33	0.0346	20	0.0346	33	36
43	0.0451	18	0.0451	33	36
54	0.0566	16	0.0566	33	36
66	0.0713	14	0.0713	33	36
97	0.1017	12	0.1017	33	36
43	0.0451	18	0.0451	50	54
54	0.0566	16	0.0566	50	54
66	0.0713	14	0.0713	50	54
97	0.1017	12	0.1017	50	54

NOTES:  
1. Fy = The minimum yield strength of the connected parts  
2. Fu = The minimum tensile strength of the connected parts  
3. When connecting materials of different thickness or tensile strengths, use the weld size for the lighter gauge section.  
4. Weld procedures are based on Section E2 of the AISI Code and AWS D1.3.  
5. Steel stud sections must be at least 18 gauge minimum for welding.

HEADER TO JAMB CONNECTION SCHEDULE			
DEPTH OF TRACK OR STUDS	STUD SCREWS TO JAMB	PLATE SCREWS TO HEADER	
8 INCHES	2-ROWS OF 3 EACH SIDE 12-TOTAL	2-ROWS OF 3 TOP AND BOTTOM 12-TOTAL	
6 INCHES	2-ROWS OF 2 EACH SIDE 8-TOTAL	2-ROWS OF 2 TOP AND BOTTOM 8-TOTAL	
4 INCHES	2-ROWS OF 2 EACH SIDE 8-TOTAL	2-ROWS OF 2 TOP AND BOTTOM 8-TOTAL	

SILL TO JAMB CONNECTION SCHEDULE			
DEPTH OF TRACK OR STUDS	STUD SCREWS TO JAMB	BENT PLATE SCREWS TO SILL	
8 INCHES	1-ROW OF 4 4-TOTAL	1-ROW OF 4 4-TOTAL	
6 INCHES	1-ROW OF 3 3-TOTAL	1-ROW OF 3 3-TOTAL	
4 INCHES	1-ROW OF 3 3-TOTAL	1-ROW OF 3 3-TOTAL	

NOTE:  
All connections are to be made with #10 screws, unco.



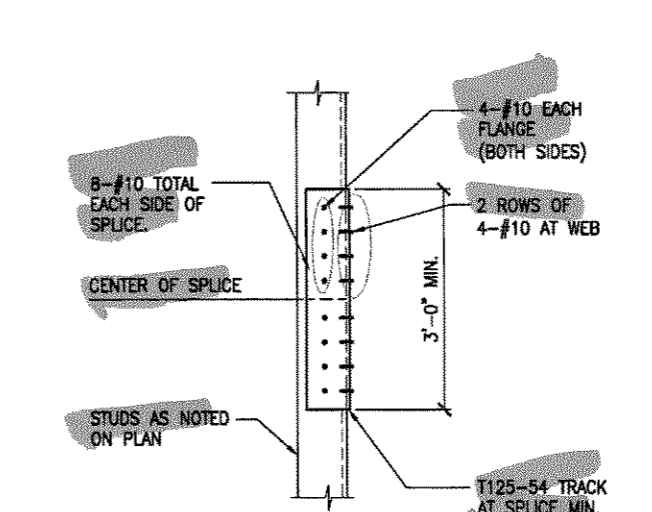
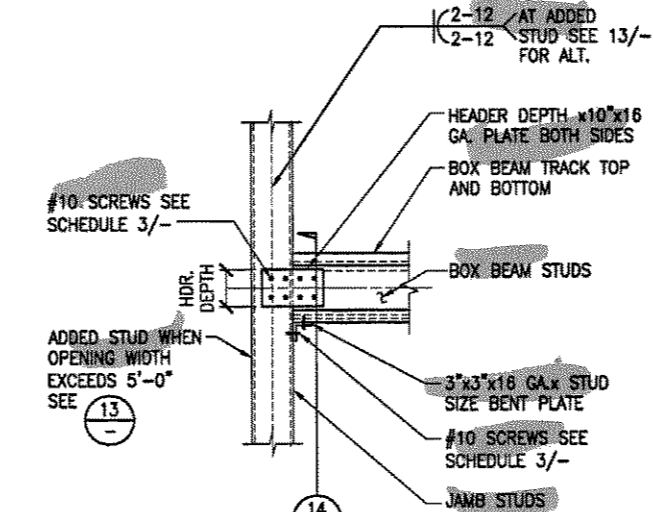
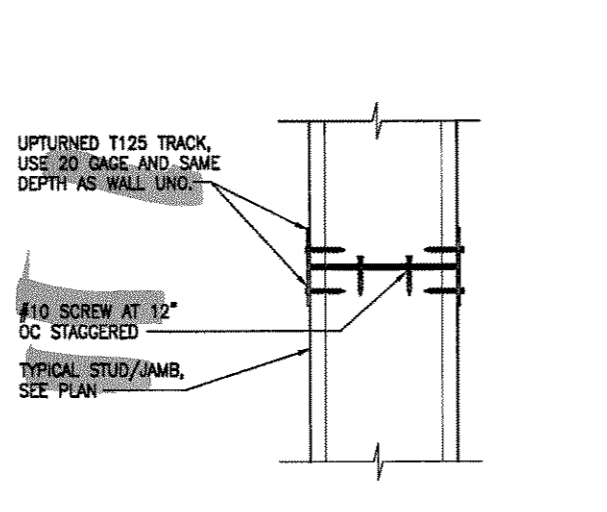
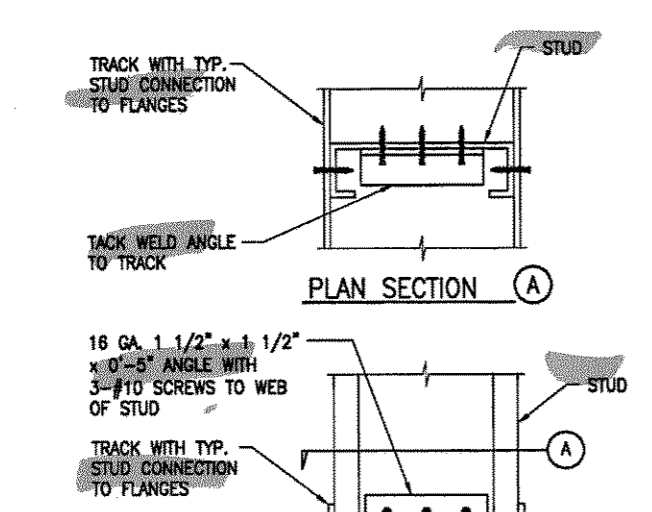
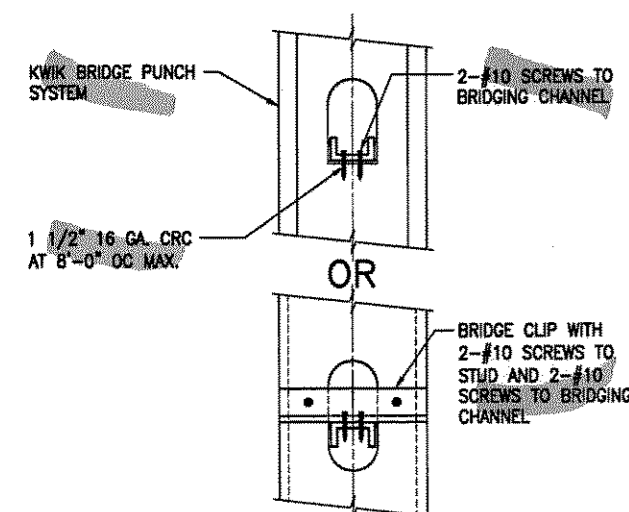
STEEL STUD/JOIST SECTION IDENTIFICATION  
NO SCALE

STEEL STUD/JOIST WELDING  
3/4" = 1'-0"

CONNECTION SCHEDULE  
NO SCALE

PLAN DETAILS AT WALL INTERSECTIONS  
NO SCALE

TYPICAL CONTINUOUS TRACK SPLICE  
NO SCALE



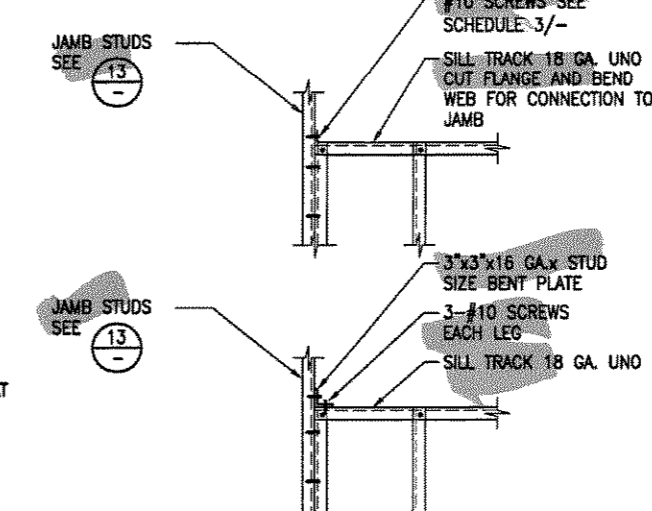
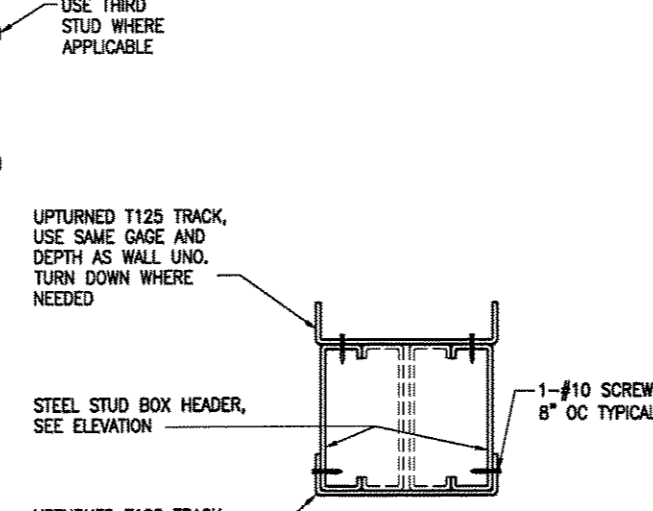
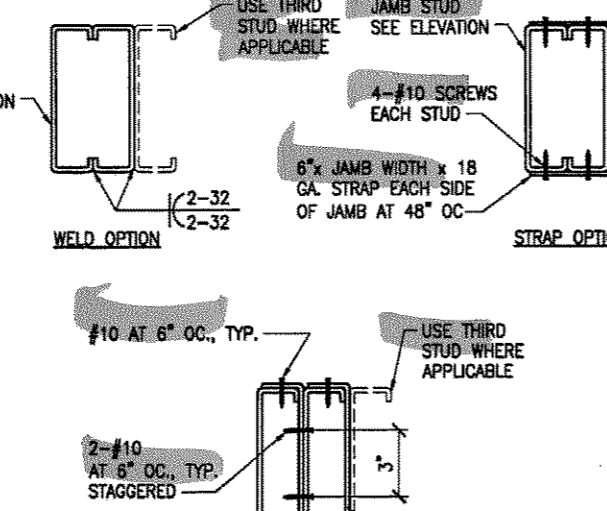
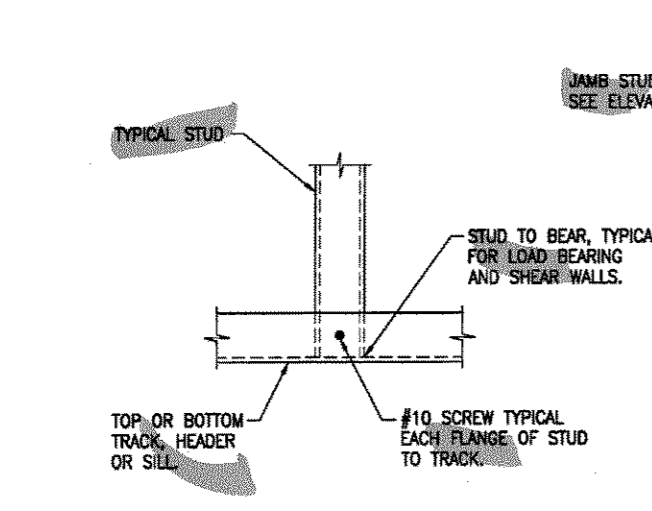
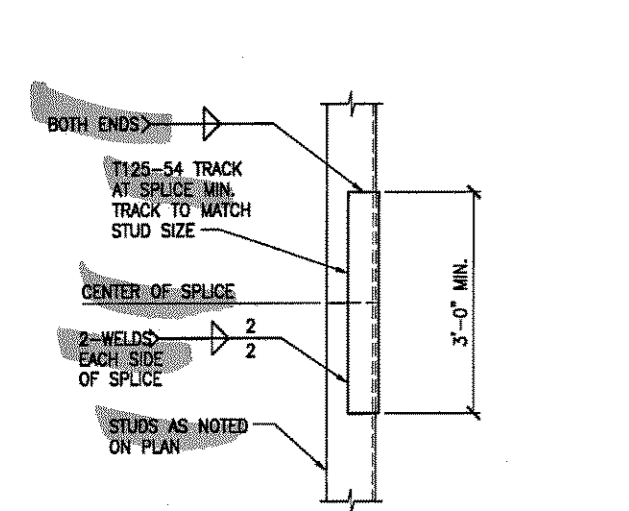
COLD-ROLLED CHANNEL BRIDGING  
NO SCALE

WEB STIFFENER DETAIL  
NO SCALE

STUD WALL TRACK TO TRACK CONNECTION  
NO SCALE

ALTERNATE STEEL BOX BEAM  
NO SCALE

TYPICAL STUD SPLICE DETAIL  
NO SCALE



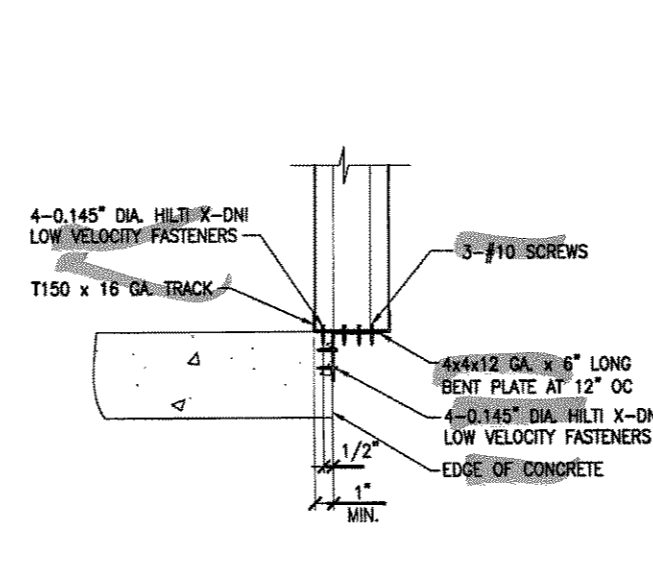
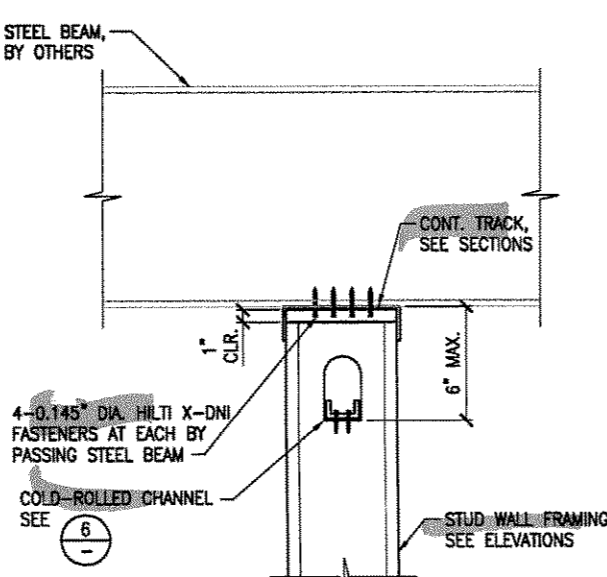
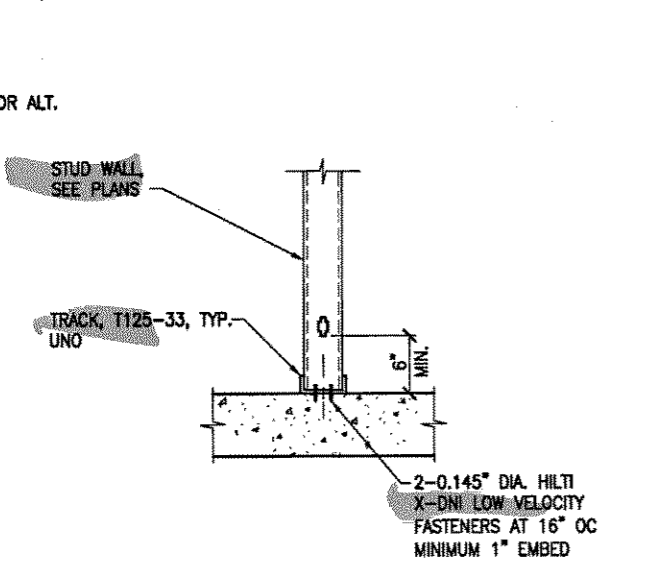
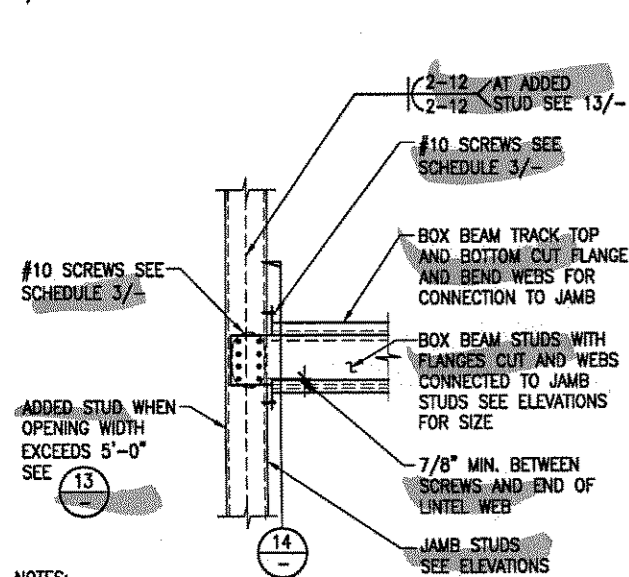
TYPICAL STUD SPLICE DETAIL (ALTERNATE)  
3/4" = 1'-0"

TYPICAL STUD CONNECTION  
3/4" = 1'-0"

JAMB STUD DETAIL  
NO SCALE

TYPICAL BOX HEADER  
NO SCALE

TYPICAL SILL TRACK  
NO SCALE

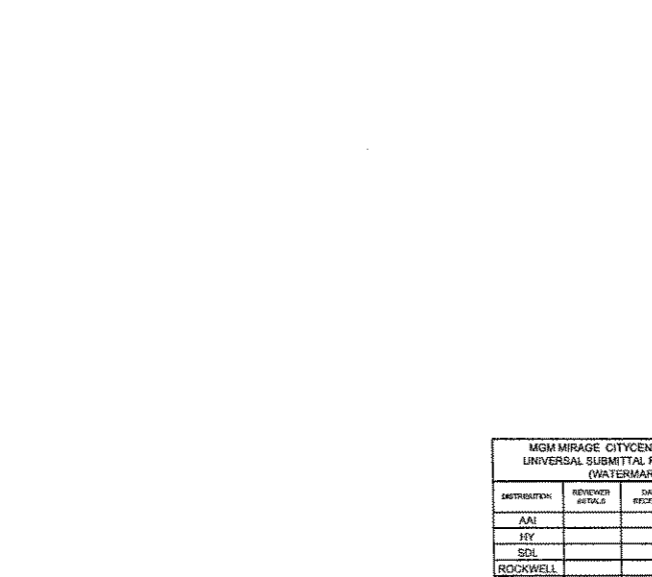


STEEL BOX BEAM  
NO SCALE

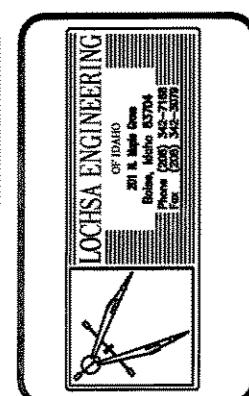
BOTTOM OF WALL AT CONCRETE  
NO SCALE

TRACK CONNECTION AT EXISTING BEAM  
NO SCALE

STUD AT SLAB EDGE  
NO SCALE



TYPICAL SILL TRACK (ALTERNATE)  
NO SCALE



DATE	BY	REVISIONS
07-11-08	CJA	1

**RAYMOND**  
SINCE 1938  
THEMED ENVIRONMENT GROUP  
6888 S. YALLEY VIEW BLVD.  
Las Vegas, Nevada 89118  
SUITE 200  
Phone: (702) 891-8870  
Fax: (702) 891-8870

PROJECT: **SOBELLA RETAIL CITY CENTER**  
LOCATION: **LAS VEGAS, NEVADA**

TYPE: **DETAILS**  
AREA: **AREA**  
AREA NUMBER: **7S**  
PACKAGE: **7**  
SCALE: **AS NOTED**  
DRAWN BY: **CJD**  
JOB NUMBER: **206343**  
SHEET NUMBER: **7S 5.01**

UNIVERSAL SUBMITTAL REVIEW STAMP

DATE: 7-11-08

PROJECT: SOBELLA RETAIL CITY CENTER

PROJECT NO. 206343

REVISIONS:

NO.	DESCRIPTION	DATE
1	ISSUED FOR FABRICATION	

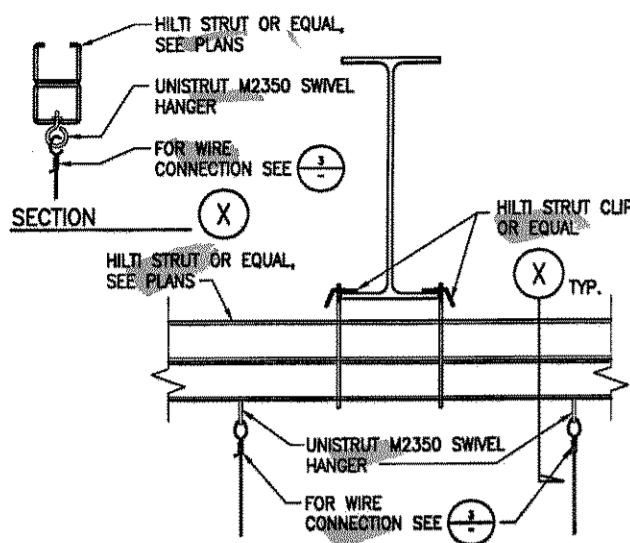
APPROVED: RILEY J. MANAPPEY, CIVIL ENGINEER, No. 81651

EXP. 12-31-08





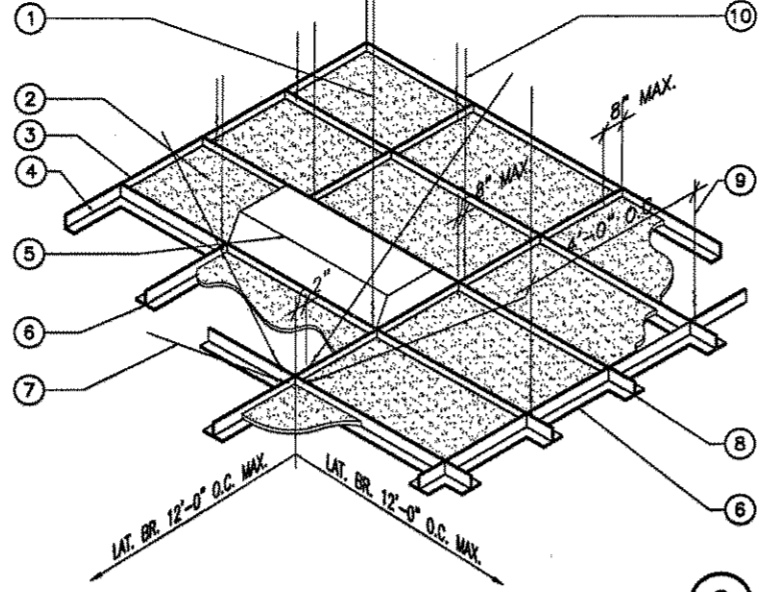




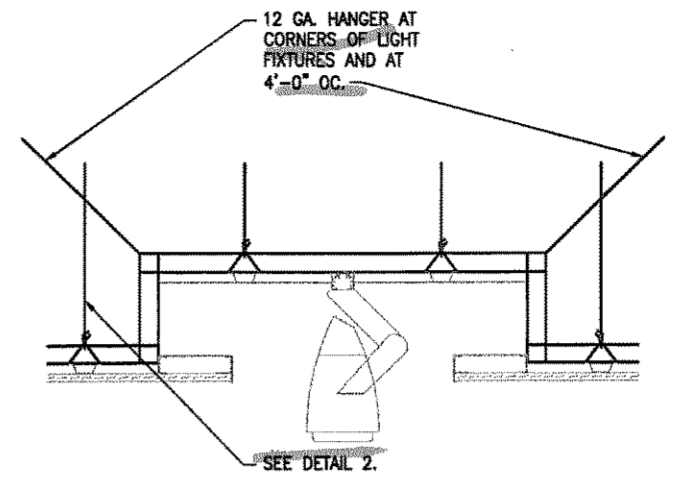
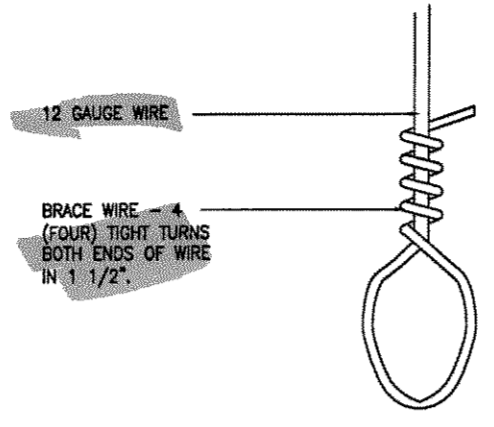
1 HILTI STRUT TO BEAM CONNECTION  
NO SCALE

- 1 12 GA. HANGERS AT EACH CORNER OF ALL LIGHT FIXTURES AND EQUIPMENT WHICH ADD ANY WEIGHT TO THE CEILING, ACOUSTICAL TILE PANEL.
- 2 CONTINUOUS WALL TRIM ANGLE.
- 3 RECESSED LIGHT FIXTURE. ADD 12 GA. HANGER AT CORNERS OF LIGHT FIXTURE.
- 4 MAIN RUNNER TEES.
- 5 12 GA. LATERAL BRACING WIRES 2" MAX. FROM MAIN RUNNER AND CROSS RUNNER INTERSECTION EACH DIRECTION AT APPROXIMATELY 45°. LOCATE LATERAL BRACING AT 4'-0" FROM WALLS AND 12'-0" O.C. MAX. EACH WAY (TYP.).
- 6 CROSS-RUNNER TEE
- 7 12 GA. HANGERS AT 4'-0" O.C. EACH WAY (TYP.).
- 8 12 GA. HANGERS AT 4'-0" PERIMETER, SUPPORTING MAIN RUNNERS AND CROSS RUNNERS, 8" FROM WALL MAX. (TYP.).

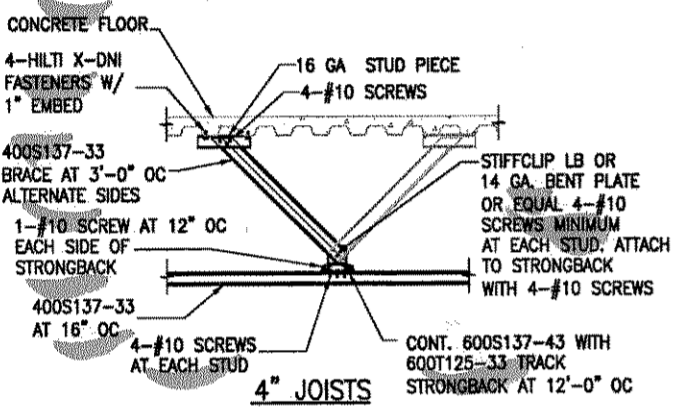
2 CEILING DETAIL  
NO SCALE



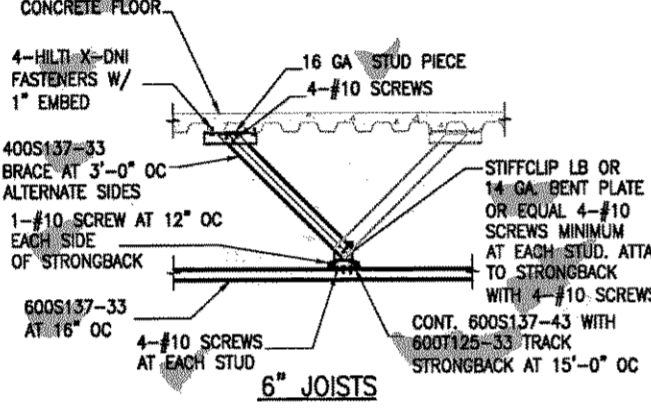
3 HANGER BRACE WIRE  
NO SCALE



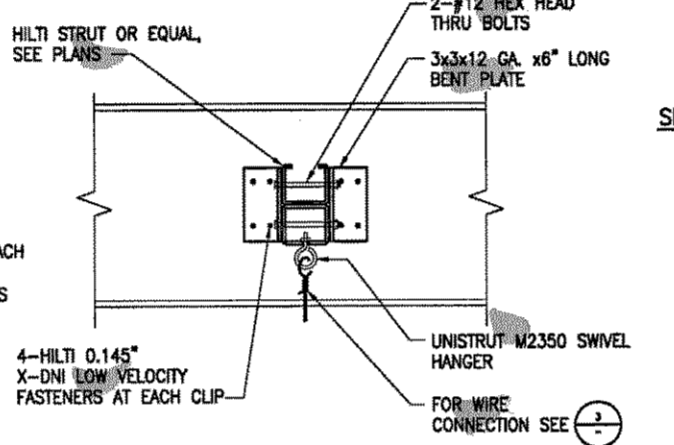
4 TYPICAL SUSPENDED LIGHTING BOX  
NO SCALE



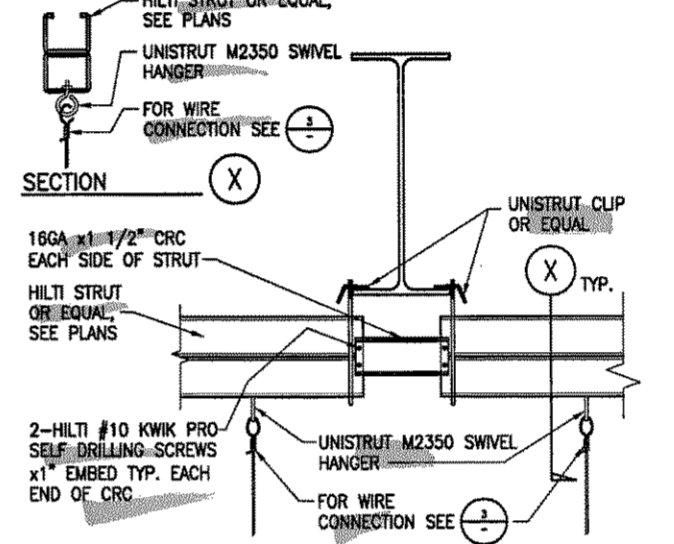
5 CEILING JOIST FRAMING  
NO SCALE



6 HILTI STRUT TO BEAM CONNECTION  
NO SCALE

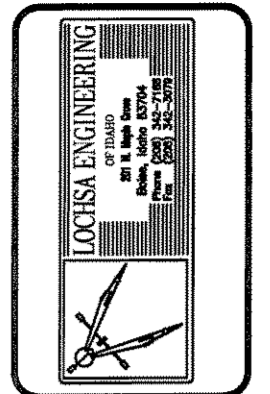


7 HILTI STRUT TO BEAM CONNECTION  
NO SCALE

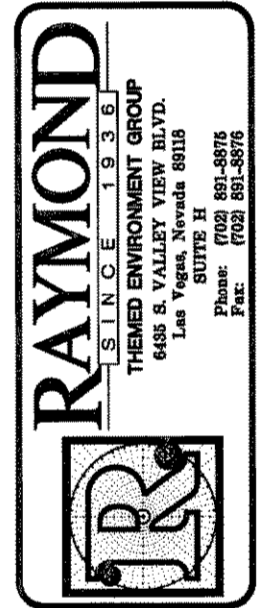


8 HILTI STRUT BACK TO BACK CONNECTION  
NO SCALE

exclude  
all unistrut



DRAWING STATUS	DATE	NO.	REVISIONS
PRELIMINARY			
SUBMITTED			
APPROVED			
RED LINE CHANGES COMPLETED			
FINAL CHECK			
ISSUED FOR FABRICATION			

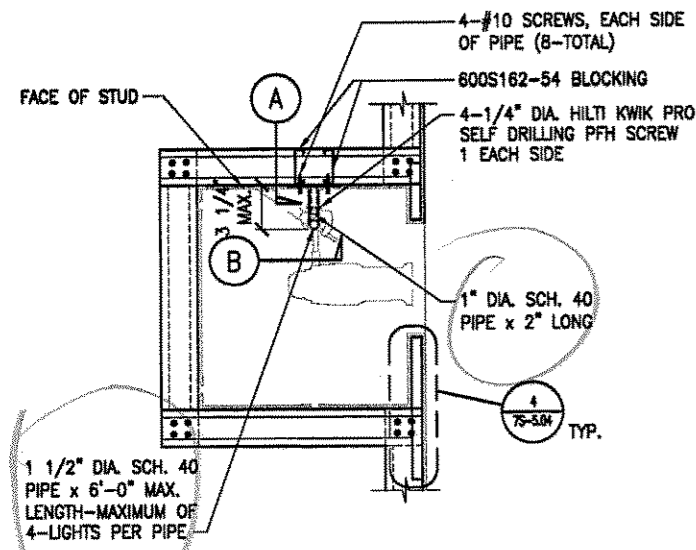


PROJECT: SOBELLA RETAIL CITY CENTER  
LOCATION: LAS VEGAS, NEVADA

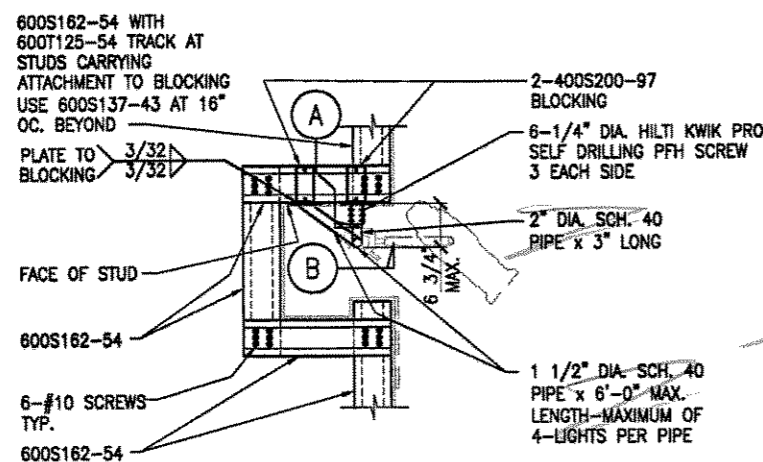


MOM MIRAGE CITYCENTER BLOCK C UNIVERSAL SUBMITTAL REVIEW STAMP (DATE/TIME)				SUBMITTAL NO. 0620-02-40-03-0 PROJECT: Sobella Retail (0174-000004)				
DISTRIBUTION	RECEIVED	DATE RECEIVED	DATE RETURNED	RE	MC	RR	RP	NR
JAM								
HY								
SOB								
ROCKWELL								
FOCUS								
FAK								
SMW								
GEN DES								

TYPE: DETAILS  
AREA: AREA  
PACKAGE: 77  
SCALE: AS NOTED  
DRAWN BY: CID  
JOB NUMBER: 208343  
SHEET NUMBER: 7S 6.01

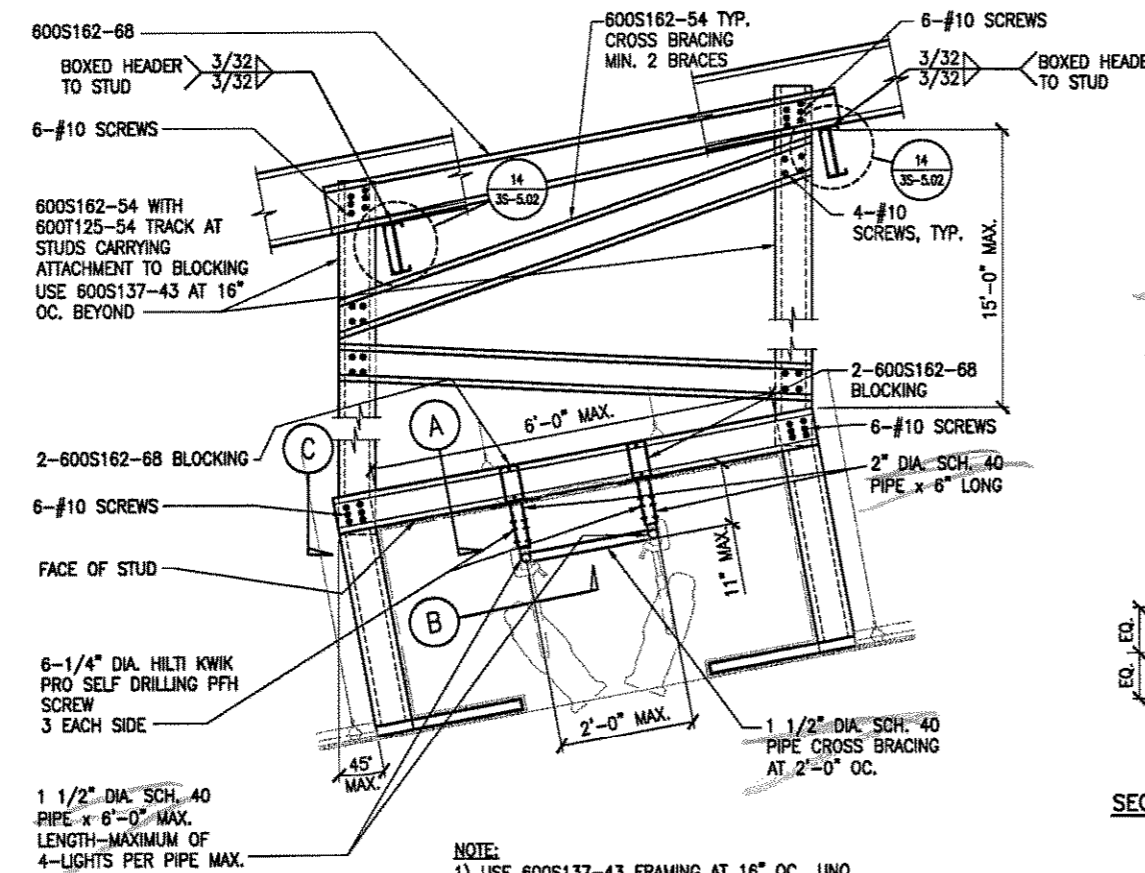
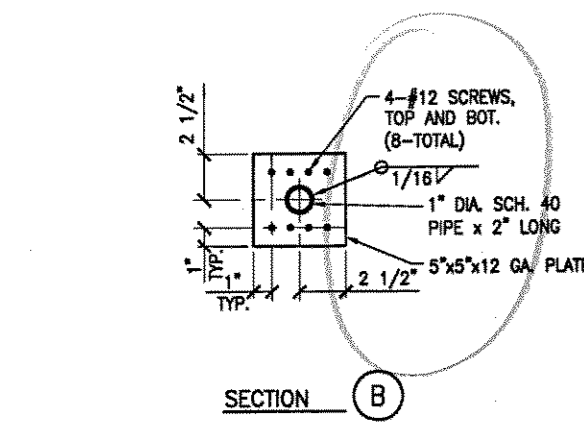
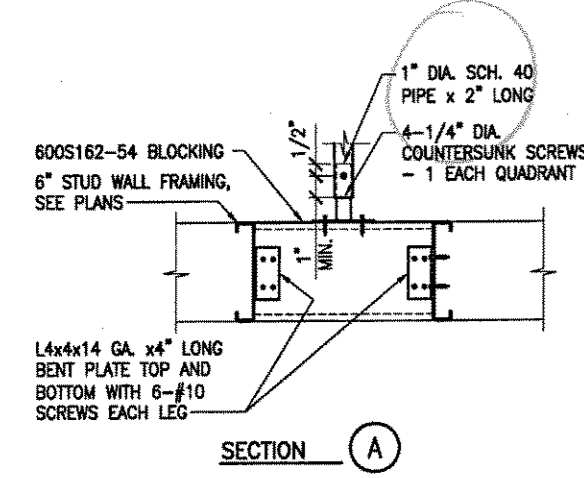


NOTE:  
1) USE 600S137-43 FRAMING AT 16\"/>

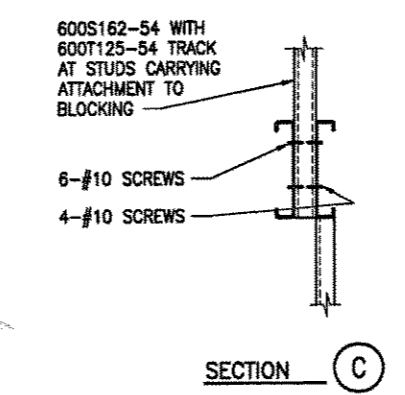
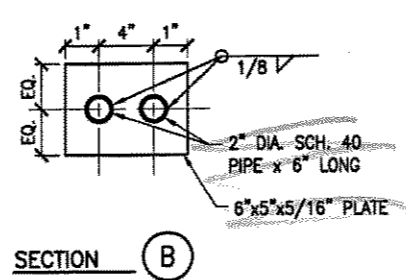
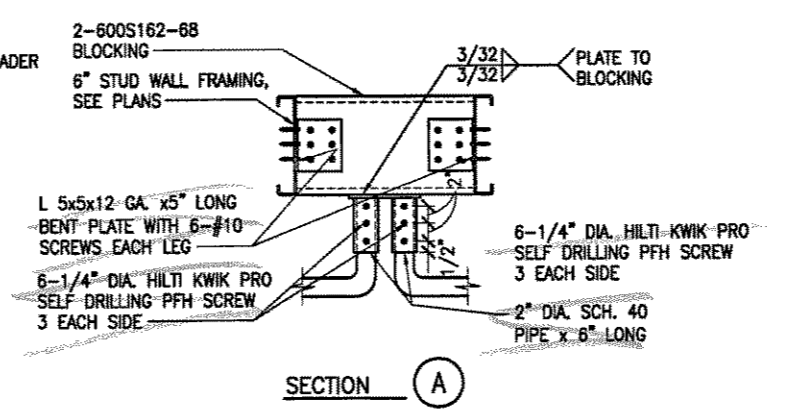


NOTE:  
1) MAXIMUM WEIGHT PER FIXTURE = 120#

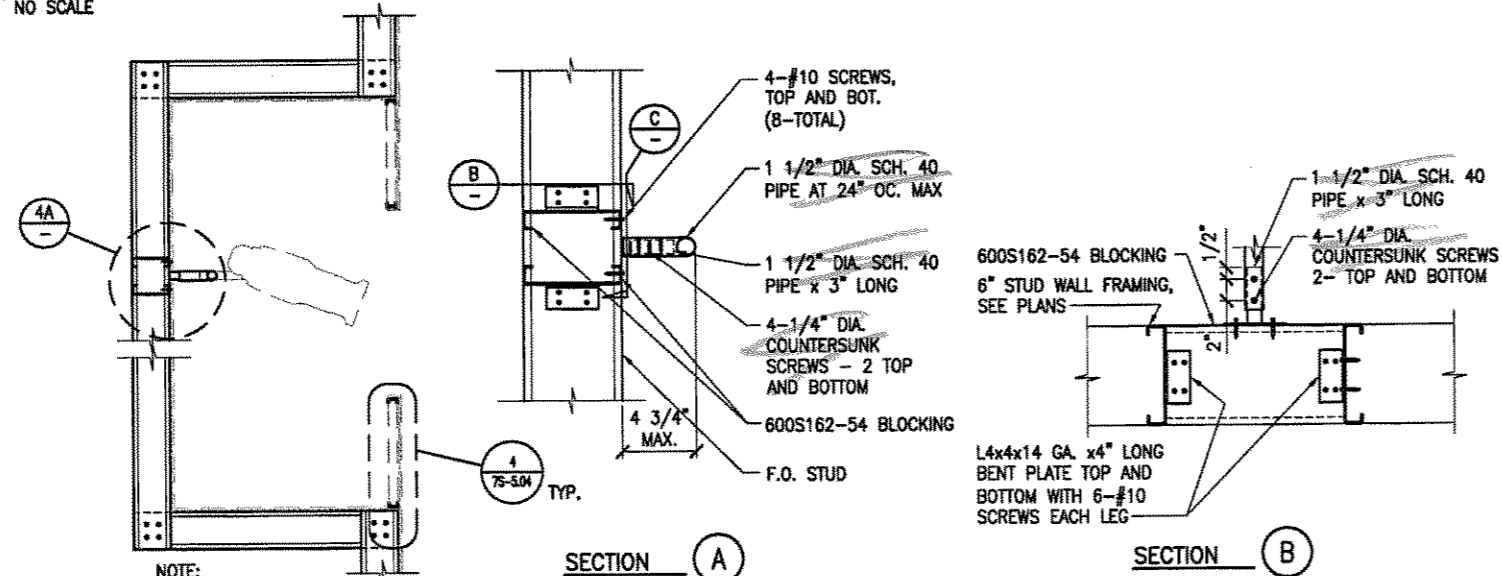
**WALL OPENING FOR LIGHT FIXTURE Z404.1**  
NO SCALE



NOTE:  
1) USE 600S137-43 FRAMING AT 16\"/>



**CEILING SLOT FOR BOOM LIFT ACCESS**  
NO SCALE

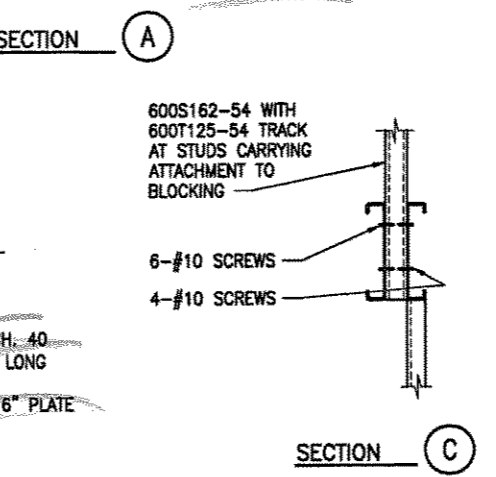
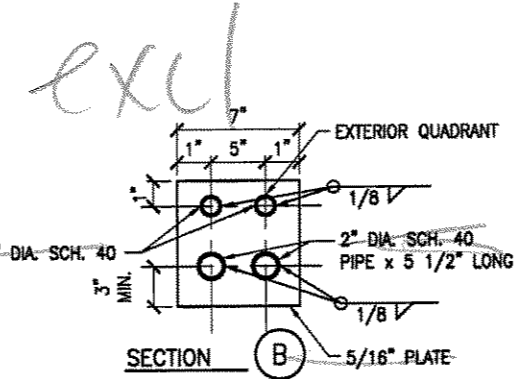


NOTE:  
1) USE 600S137-43 FRAMING AT 16\"/>

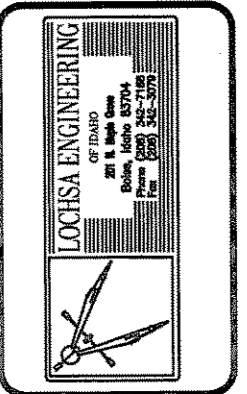
**ENLARGED LIGHT CONNECTION**  
NO SCALE

**THEATRICAL WALL WASH OPENING**  
NO SCALE

*exclude all pipes*



REVISION	DATE	BY	REASON



DRAWING STATUS	INITIAL	DATE	NO.	REVISIONS

**RAYMOND**  
SINCE 1936  
THEMED ENVIRONMENT GROUP  
6405 S. VALLEY VIEW BLVD.  
Las Vegas, Nevada 89118  
SUITE II  
Phone: (702) 881-8876  
Fax: (702) 881-8878

PROJECT: **SOBELLA RETAIL CITY CENTER**  
LOCATION: **LAS VEGAS, NEVADA**

TYPE: **DETAILS**  
AREA:   
AREA NUMBER:   
PACKAGE: **77**  
SCALE: **AS NOTED**  
DRAWN BY: **CID**  
JOB NUMBER: **206343**  
SHEET NUMBER: **7S 6.02**

